



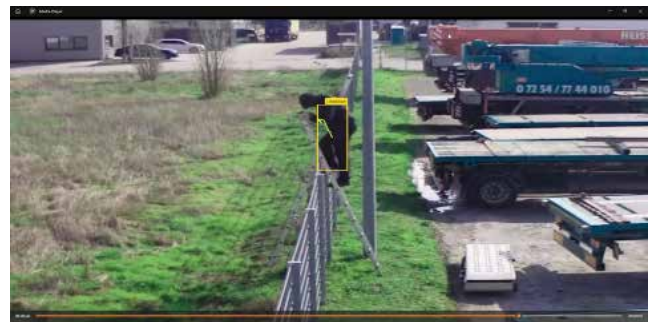
Perimeter protection

Deter threats and proactively safeguard your facilities

With HxGN dC3 Video | Analytics you can effectively and reliably protect indoor and outdoor areas against unwanted intrusion. Its flexible rules system offers numerous possibilities for efficient area monitoring across unlimited zones.

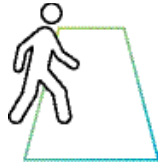
Enhance security with a powerful solution designed to detect and deter threats before they become incidents. By integrating this intelligent analytics solution into your video system, you can easily safeguard your facility, infrastructure or property with real-time monitoring and automated alerts, ensuring the highest level of protection.

AI-based, this solution ensures weather-independent operation using standard IP, infrared, thermal imaging or embedded cameras. Initial configuration is fast and simple. Analytics channel can operate in a normal or advanced mode, allowing human/vehicle classification, triggering alarms for preset classes of detection detected (e.g. humans only, humans and vehicles, or vehicles only).



HxGN dC3 Video | Analytics
powered by SAIMOS

Use cases



Area security

Secure outdoor areas by combining several rule sets:

- Flexible rule and zone system: Easy configuration
- Restricted area: Detection of loitering and persons running in critical areas
- Time based restriction: Ensures that access to critical areas is not violated during certain hours
- Works indoors and outdoors



Perimeter security

Protects the perimeter from unwanted intruders:

- Alarm scenario: Send alerts to HxGN dC3 Video in case of an alarm
- Direction restriction: Alarm is triggered when an object passes in a predefined direction
- Zone-based alarms: Define early alarms for timely detection of intruders

Key features

Algorithms

- Intrusion
- Loitering
- Direction of movement
- Maximum allowed speed

General characteristics

- Combination of motion detection with full AI classification
- Several tracking types to adapt to different scenarios

Configuration

- Multiple individually configurable alarm zones
- Easy scene calibration based on body sizes directly in the live video view
- Intelligent system for minimized false alarm rates

Triggers

- Dwell time/speed
- Direction
- Entering/exiting zones
- Object classification (human, vehicle, etc.)
- Occupancy detection (combination of dwell time and object)

Discover also more video analytics scenarios:

| hxgnsecurity.com

Hexagon is the global leader in digital reality solutions, combining sensor, software and autonomous technologies. We are putting data to work to boost efficiency, productivity, quality and safety across industrial, manufacturing, infrastructure, public sector and mobility applications. Our technologies are shaping production and people-related ecosystems to become increasingly connected and autonomous – ensuring a scalable, sustainable future.

Hexagon's Safety, Infrastructure & Geospatial division improves the resilience and sustainability of the world's critical services and infrastructure. Our solutions turn complex data about people, places and assets into meaningful information and capabilities for better, faster decision-making in public safety, utilities, defense, transportation, government and physical security.

Hexagon (Nasdaq Stockholm: HEXA B) has approximately 24,000 employees in 50 countries and net sales of approximately 5.2bn EUR. Learn more at hexagon.com and follow us [@HexagonAB](https://twitter.com/HexagonAB).