



# **OO-Ocularis-Flex**

---

## **Installation & Configuration Guide**



**On-Net Surveillance Systems, Inc.**  
One Blue Hill Plaza, 7<sup>th</sup> Floor, PO Box 1555  
Pearl River, NY 10965  
Phone: (845) 732-7900 | Fax: (845) 732-7999  
Web: [www.onssi.com](http://www.onssi.com)

*OO-Ocularis-Flex 5.4.125.7*

*00008182017-1430-5.4.125.7*

**Legal Notice**

This product manual is intended for general information purposes only, and due care has been taken in its preparation.

Any risk arising from the use of this information rests with the recipient, and nothing herein should be construed as constituting any kind of warranty.

© 2002-2017 On-Net Surveillance Systems, Inc. All rights reserved. OnSSI and the 'Eye' logo are registered trademarks of On-Net Surveillance Systems, Inc. Ocularis, Ocularis Client, Ocularis Client Lite, Ocularis Video Synopsis, NetEVS, NetDVMS, NetDVR, ProSight, NetGuard, NetGuard-EVS, NetSwitcher, NetMatrix, NetCentral, NetTransact, NetPDA and NetCell are trademarks of On-Net Surveillance Systems, Inc. All other trademarks are property of their respective owners.

On-Net Surveillance Systems, Inc. reserves the right to change product specifications without prior notice.

# Table of Contents

<b>FLEX API</b> .....	<b>2</b>
PRE-REQUISITES SERVER REQUIREMENTS .....	2
CONFIGURE THE FLEX API .....	2
<b>OO-OCULARIS-FLEX</b> .....	<b>5</b>
PRE-REQUISITES REQUIREMENTS .....	5
INSTALL THE OO-OCULARIS-FLEX .....	5
CONFIGURE THE OO-OCULARIS-FLEX.....	8
IP ADDRESSES .....	8
<i>Ocularis Server Address</i> .....	8
<i>DNA Fusion Flex Address</i> .....	8
<i>Get Assets</i> .....	9
CONFIGURATION .....	11
<i>Set Source in Ocularis</i> .....	11
<i>Seconds to Throttle Events</i> .....	11
<i>Do not show old events</i> .....	12
SERVICE CONTROL.....	12
EVENT LOG .....	12
EXIT.....	13
<b>OCULARIS</b> .....	<b>14</b>
OCULARIS ADMINISTRATOR CONFIGURATION .....	14
OCULARIS CLIENT .....	16
<b>MISCELLANY</b> .....	<b>17</b>
<b>CONTACT INFORMATION</b> .....	<b>18</b>

# Flex API

## Pre-Requisites Server Requirements

- DNA Fusion version 6.6 is required.
- Flex API installed on the DNA Fusion server.
- Microsoft .NET 4.0 Framework or higher
- Windows 7 Professional or higher
- MSMQ
- XML-RPC

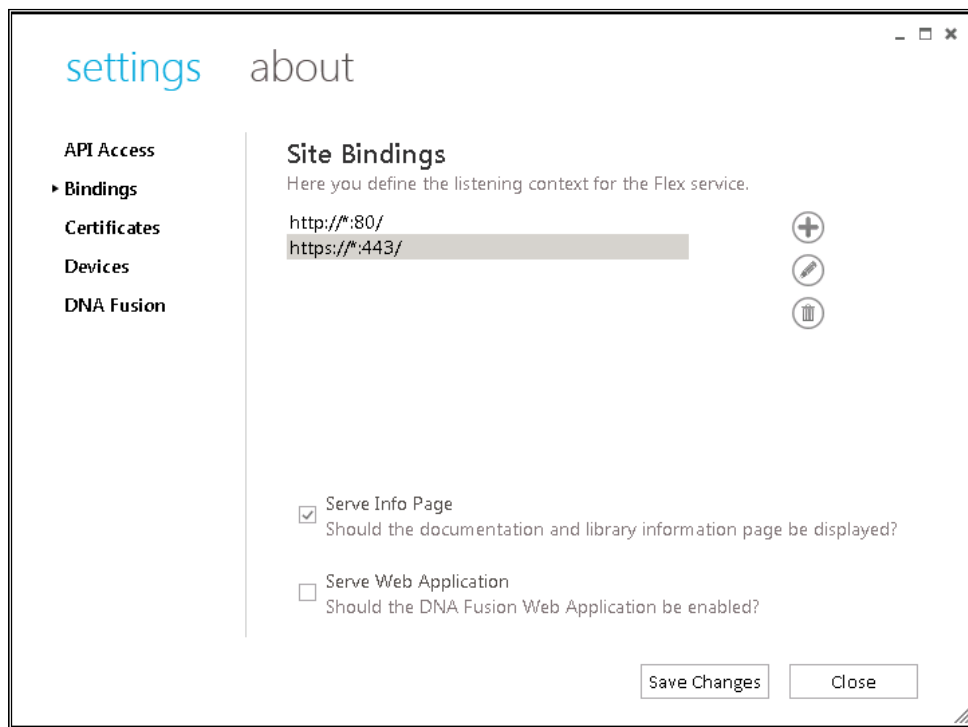
## Configure the Flex API

- 1) The *Flex API Install.exe* must be run with Administrator privileges and installed in the Administrative Account. Do not install in *Local System*.
- 2) *Configure the Flex API*.

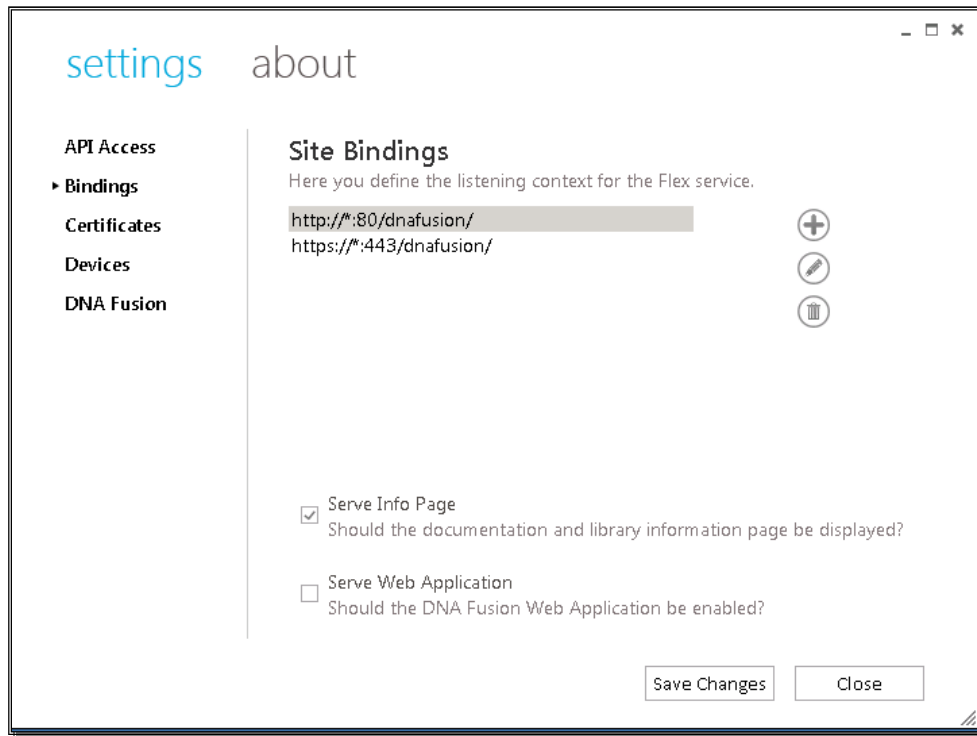
Install and run **C:\Program Files (x86)\Flex API\OpenOptions.dnaFusion.Flex.exe**.

The **Flex API** must be installed *with* administrative privileges and be installed in an administrative account. **Do not install in *Local System***.

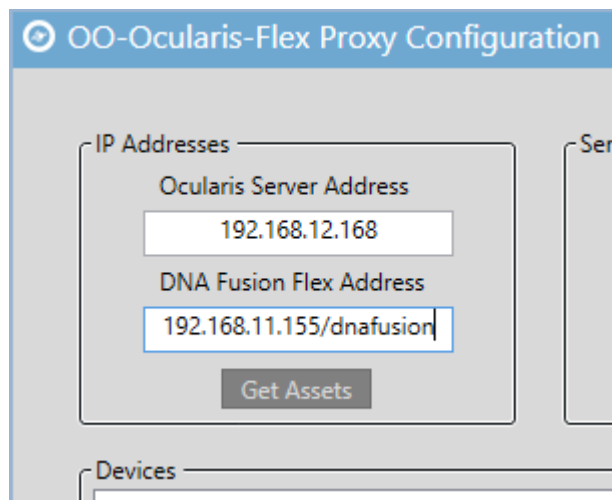
- a) Set the Site Bindings...



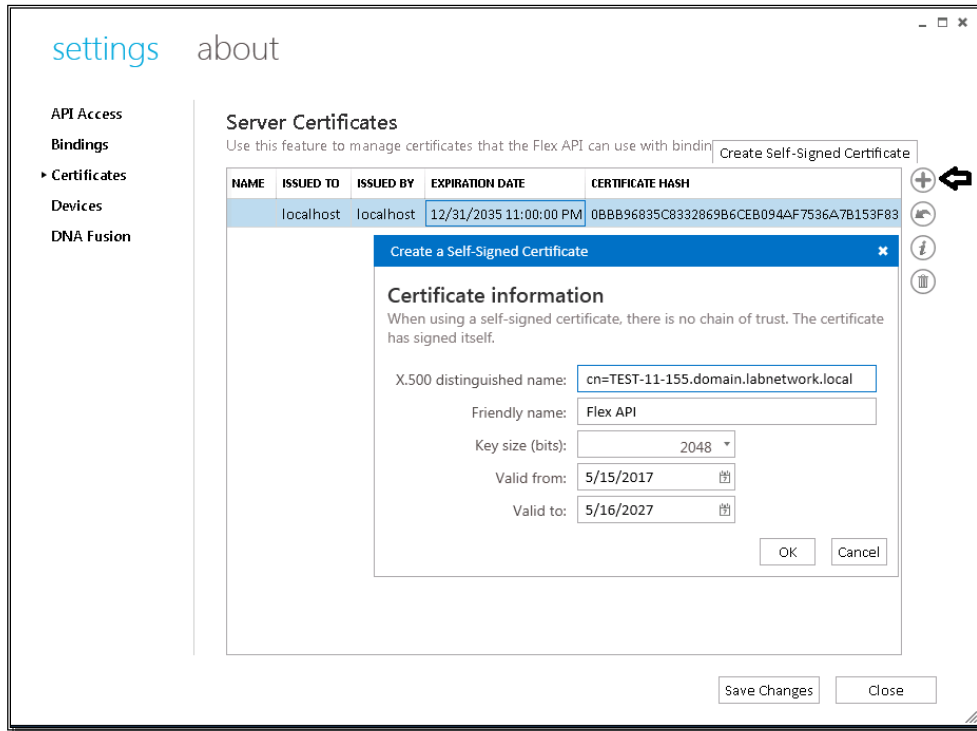
Custom Site Bindings...



...require that the 'customization' be added to the **DNA Fusion Flex Address** on the **OO-Ocularis-Flex Proxy Configuration** dialog, i.e. "192.168.11.155/dnafusion".



b) Create a Self-Signed Certificate



3) **Save Changes.**

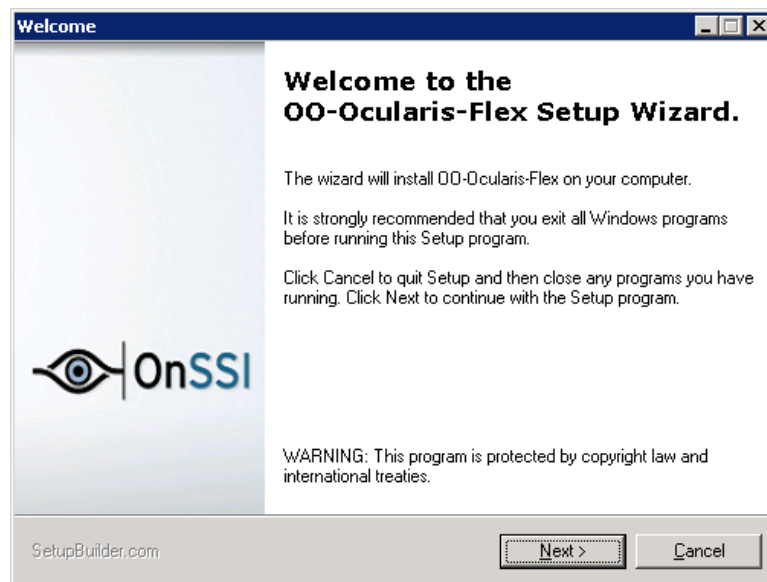
# OO-Ocularis-Flex

## Pre-Requisites Requirements

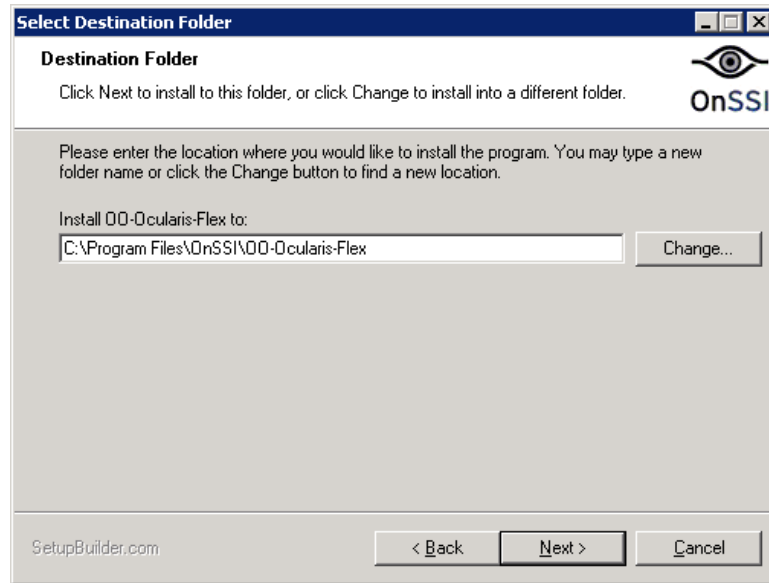
- Windows 7 Professional or higher
- Message Queuing - Ensure the system has Microsoft Message Queueing (MSMQ) installed.

## Install the OO-Ocularis-Flex

Install the **OO-Ocularis-Flex** by executing the installer package (i.e. OO-Ocularis-Flex Installer a.b.c.d.exe).



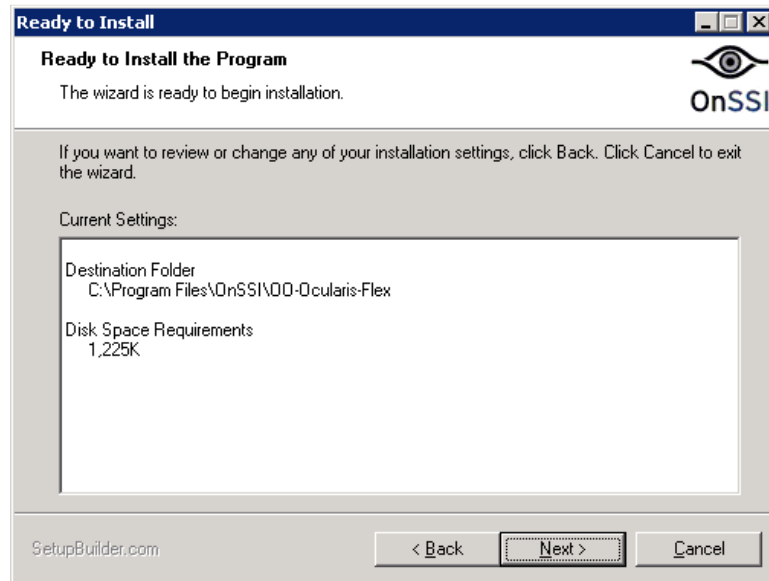
**Welcome** dialog for the **OO-Ocularis-Flex Setup Wizard** to have **Open Options DNA Fusion** devices and events delivered to **Ocularis**. Click **Next** to continue or **Cancel** to exit.



Select **Destination Folder** where **OO-Ocularis-Flex** will be installed. Click **Back** to go back to the Welcome dialog.  
The default **Install OO-Ocularis-Flex to** location is

**C:\Program Files\OnSSI\OO-Ocularis-Flex.**

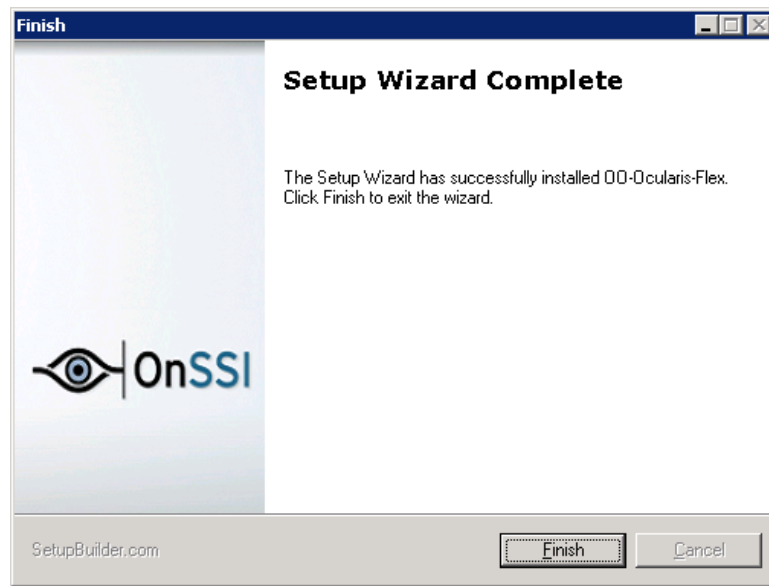
Click **Change** to modify this location or manually type your location in the text box. If the settings are satisfactory then click **Next** to continue or **Cancel** to exit.



Review the settings. If modification is needed click **Back** and make the necessary changes. If the settings are satisfactory the click **Next** to proceed.

The plug-in will install.

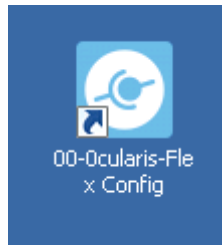




The **OO-Ocularis-Flex Setup Wizard** has completed. Click **Finish** to exit the Setup Wizard.

## Configure the OO-Ocularis-Flex

The **OO-Ocularis-Flex Config** icon will be present on the desktop.



Click the icon to launch the **OO-Ocularis-Flex Proxy Configuration** dialog.

 A screenshot of the "OO-Ocularis-Flex Proxy Configuration" dialog box. The window title is "OO-Ocularis-Flex Proxy Configuration". It contains several sections:
 

- IP Addresses:** Two text input fields labeled "Ocularis Server Address" and "DNA Fusion Flex Address", with a "Get Assets" button below them.
- Service Control:** A "Started" status indicator, a "Start" button, and a "Stop" button.
- Configuration:** A "Set Source in Ocularis" button, a "Seconds to Throttle Events" spinner set to 5, and a "Do not show old events" checkbox.
- Event Log:** A "View Log" button.
- Devices:** A large empty rectangular area.
- Events:** A large empty rectangular area.

 At the bottom, there is an "OnSSI" logo on the left, an "Exit" button in the center, and the version number "v5.4 (5.4.125.8)" on the right.

Initial **OO-Ocularis-Flex Proxy Configuration** dialog is displayed.

## IP Addresses

Enter the IP Addresses information.

### **Ocularis Server Address**

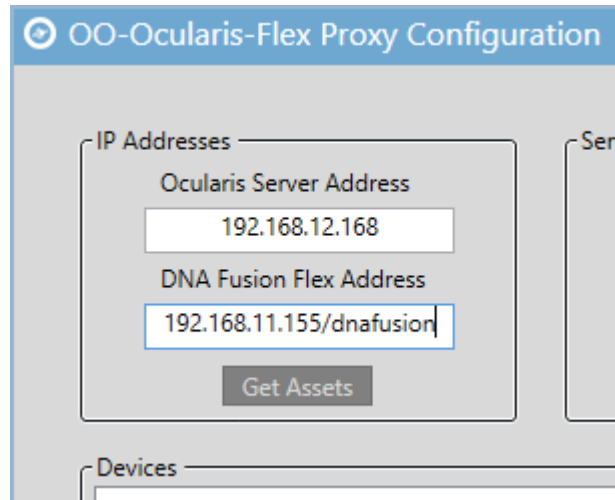
This is the address of the Ocularis Server (Base). i.e. *192.168.12.168*

### **DNA Fusion Flex Address**

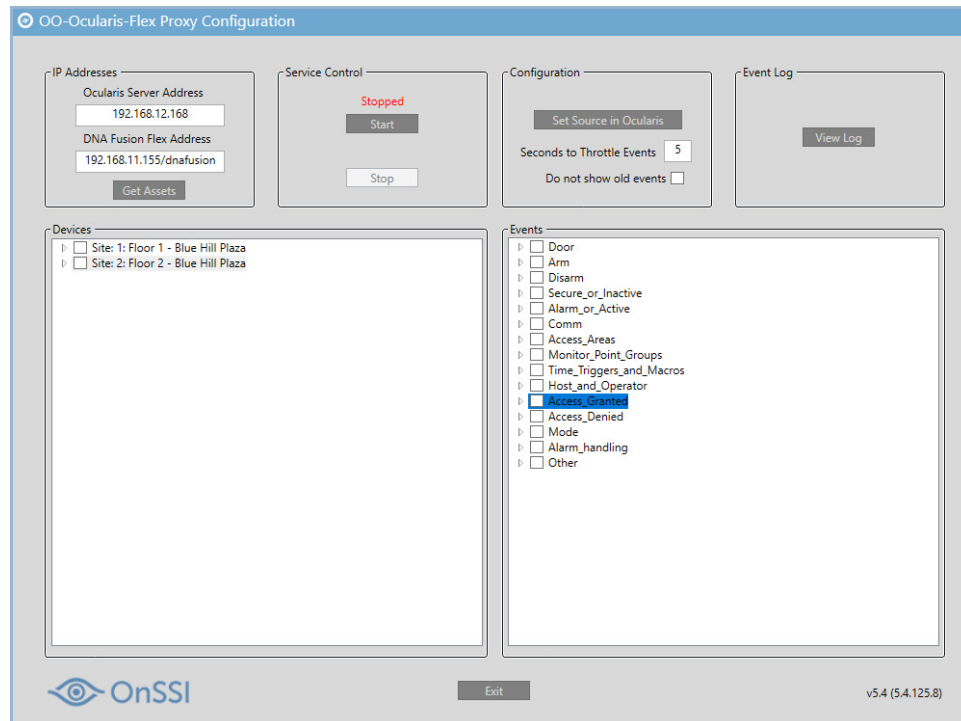
Enter **DNA Fusion Flex Address**. i.e. *192.168.11.155/dnafusion*. Refer to #2a for custom site bindings.

## Get Assets

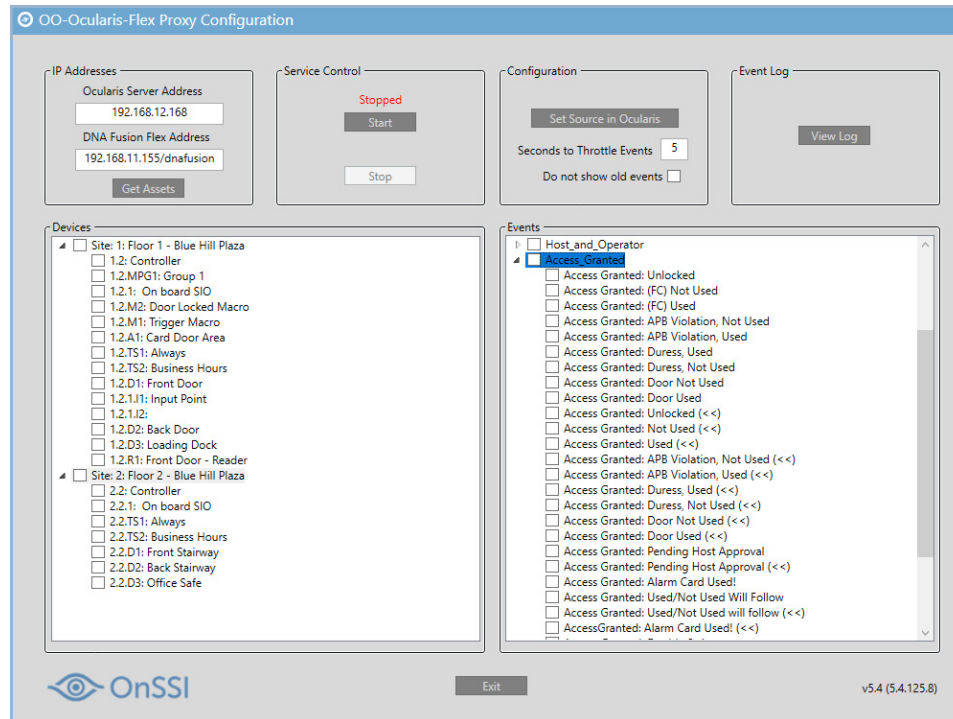
Click **Get Assets** to load the **DNA Fusion** assets into the OO-Ocularis-Flex Proxy.



The available DNA Fusion Devices and Events will populate the Devices and Events panes.



Click on the expand icon to expose all the information for the Devices and Events.



Select the desired Devices and Events.

For this example we will have 2 Sites:

**Site: 1: Floor 1 – Blue Hill Plaza** and

**Site: 2: Floor 2 – Blue Hill Plaza**

and with 3 doors:

**1.2.D1: Front Door**

**1.2.D2: Back Door**

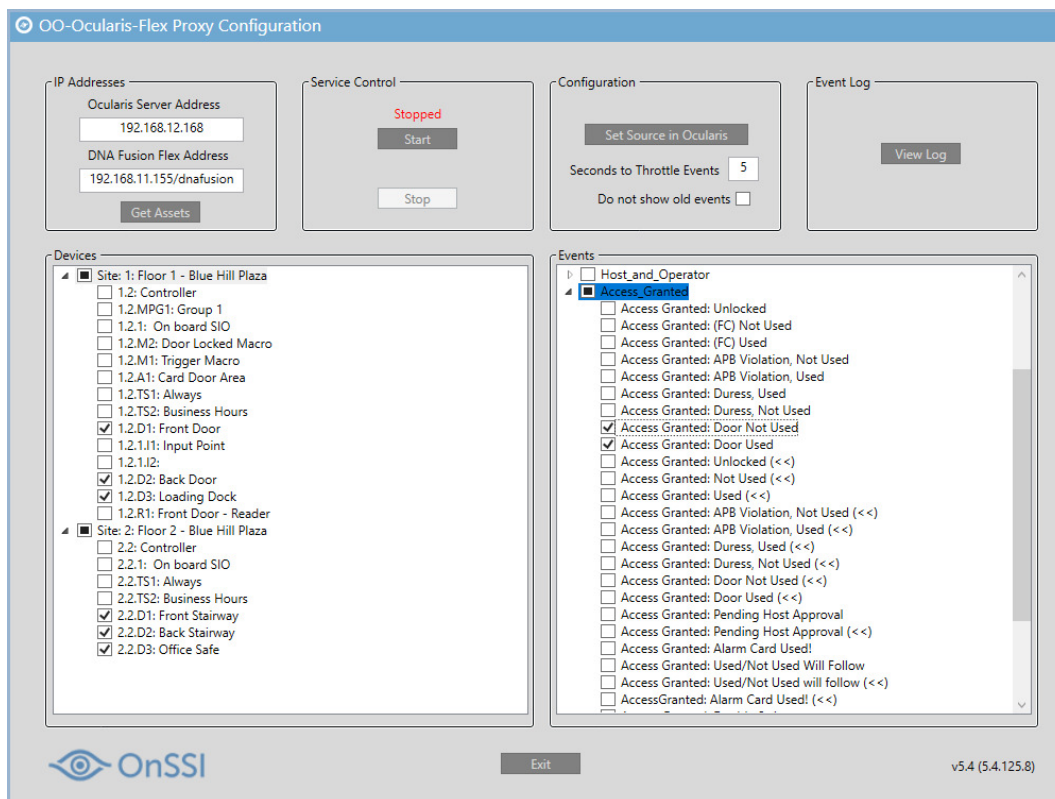
**1.2.D1: Loading Dock**

**2.2.D1: Front Stairway**

**2.2.D2: Back Stairway** and

**2.2.D3: Office Safe.**

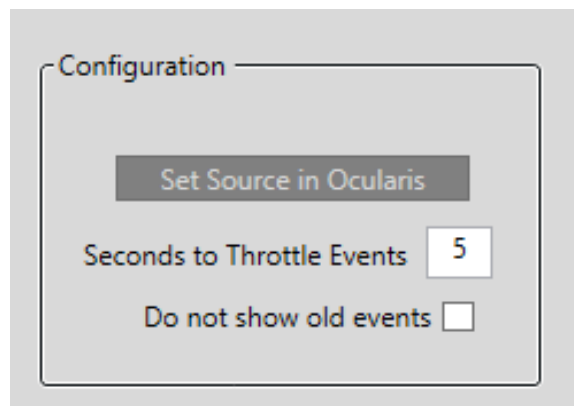
We are interested in the **Access Granted: Door Used** and **Access Granted: Door Not Used** events.



## Configuration

### Set Source in Ocularis

Click **Set Source in Ocularis** to send the event source setup to the desired **Ocularis** system. The **DNA Fusion** and **Ocularis** are now linked.



### Seconds to Throttle Events

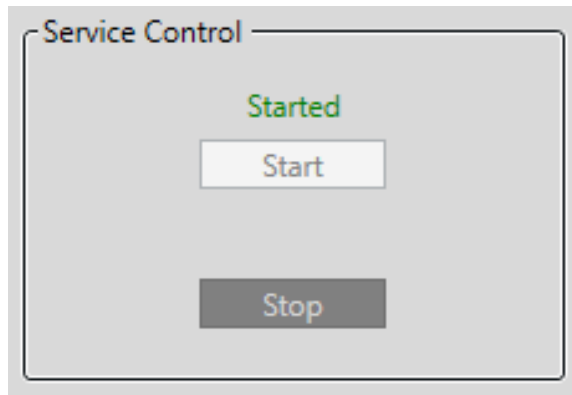
Optionally a value can be changed in **Seconds to Throttle Events** to ignore any like events being reported for the number of seconds configured. This is 5 seconds by default.

## Do not show old events

Optionally, check **Do not show old events** if events that occurred prior to starting the service are not desired. This is unchecked by default.

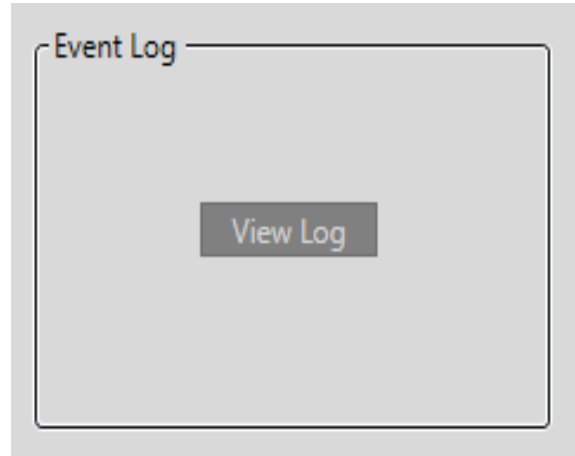
## Service Control

Click **Start** to start the service. The Events will now flow from **DNA Fusion** to **Ocularis** using the OO-Ocularis-Flex.

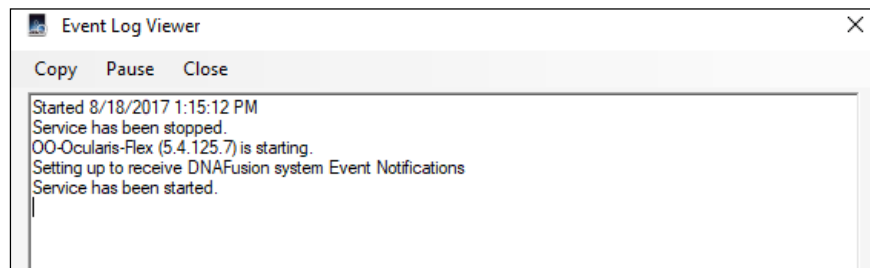


## Event Log

If necessary use the Event Log to verify the communication from the plug-in to the Ocularis Base.

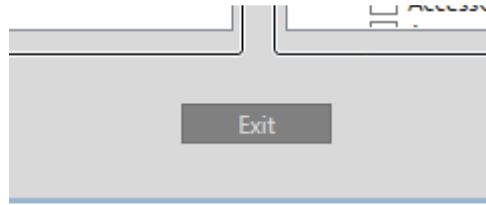


The content of the Event Log can be used by Tech Support if assistance is needed.



## **Exit**

Click **Exit** to exit the dialog.



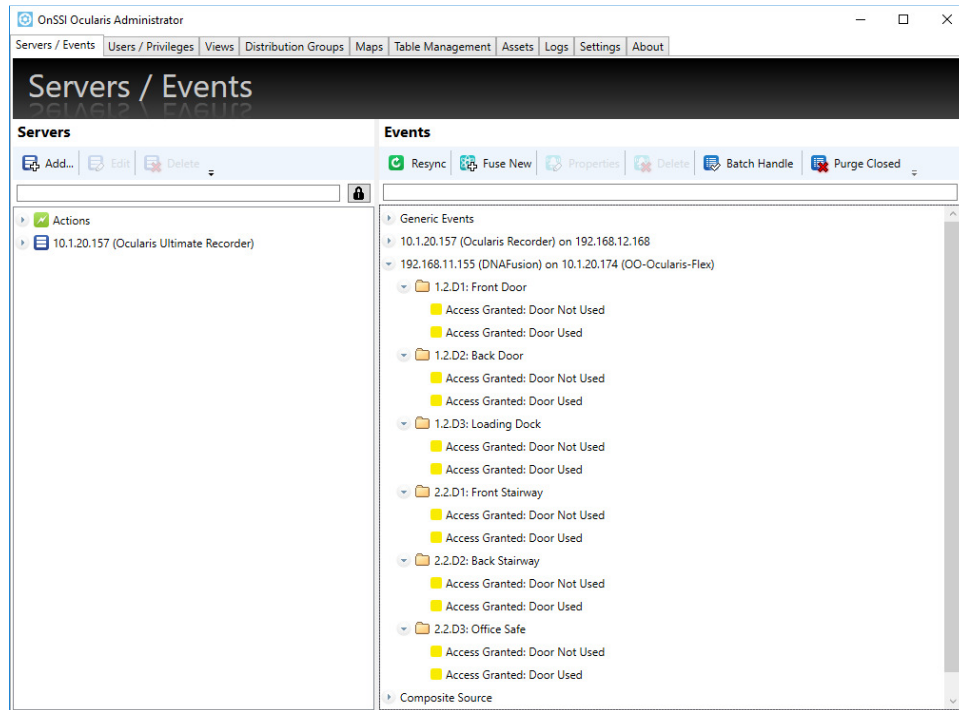
# Ocularis

## Ocularis Administrator Configuration

Launch Ocularis Administrator.

The **DNA Fusion** events should appear on the right in the Events pane of the **Servers/Events** tab.

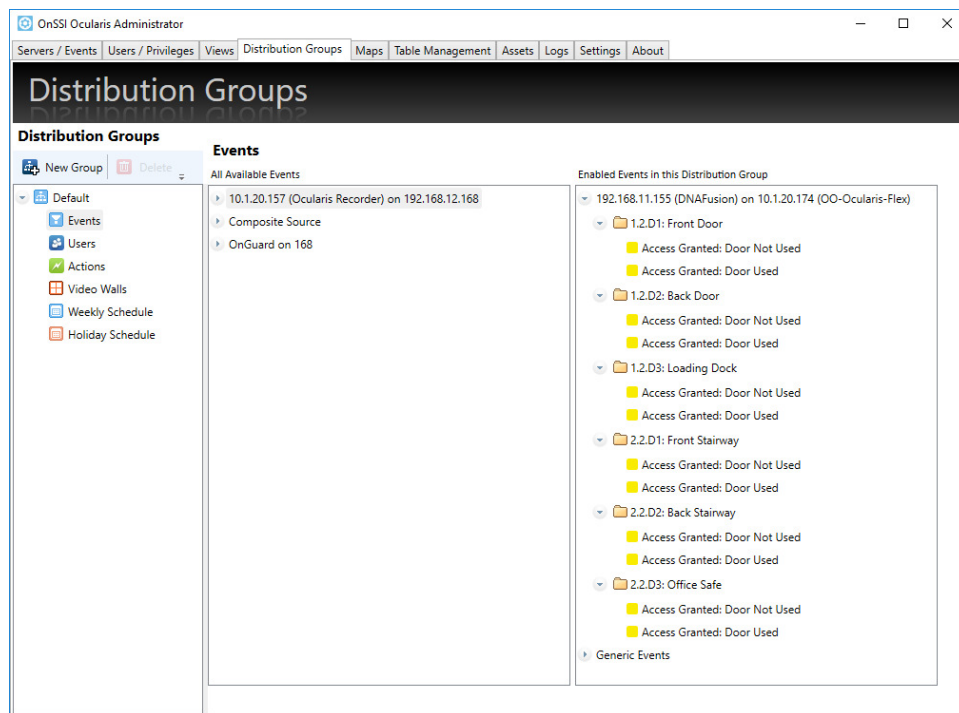
In our example these are **192.168.11.155 (DNAFusion) on 10.1.20.174 (OO-Ocularis-Flex)**



Associate cameras to the events you would like to monitor. Do this by expanding the cameras on the left **Servers** pane and dragging and dropping a camera from the left pane onto an event on the right **Events** pane.

Set up who can receive these alerts and when in the Distribution Group.





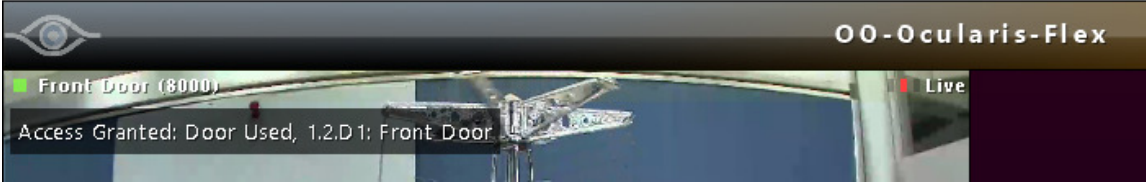
- 1) Click **New Group** to create a new event Distribution Group.
- 2) Identify the **DNA Fusion** events by expanding the event source and dragging and dropping the event(s) from the center pane to the right pane.
- 3) Identify which users should receive alerts when these events take place. Select **Users**, expand the user group and then drag and drop usernames from the center pane to the right pane.
- 4) Alerts will occur 24/7/365. If you would like to limit when the alerts get delivered, click Weekly Schedule and modify the schedule.

For more details instructions, refer to the **Ocularis Administration User Manual** obtainable from the **About** tab.

## Ocularis Client

The system is now set to receive events from **DNA Fusion** into **Ocularis**. Launch **Ocularis Client** and use a Blank Screen to view these events.

Ocularis Client



OO-Ocularis-Flex

Front Door (8000) Live

Access Granted: Door Used, 1,2,D1: Front Door

Events			
▼ Priority	Time	Rule	Camera
5		<b>Access Granted: Door Used</b>	8/18/2017 12:57:45
		Access Granted: Door Used, 2,2,D3: Office Safe	
		Office Safe (8005)	
5		<b>Access Granted: Door Used</b>	8/18/2017 12:57:28
		Access Granted: Door Used, 2,2,D2: Back Stairway	
		Back Stairway (8004)	
5		<b>Access Granted: Door Used</b>	8/18/2017 12:57:11
		Access Granted: Door Used, 2,2,D1: Front Stairway	
		Front Stairway (8003)	
5		<b>Access Granted: Door Used</b>	8/18/2017 12:56:50
		Access Granted: Door Used, 1,2,D3: Loading Dock	
		Loading Dock (8002)	
5		<b>Access Granted: Door Used</b>	8/18/2017 12:56:31
		Access Granted: Door Used, 1,2,D2: Back Door	
		Back Door (8001)	
5		<b>Access Granted: Door Used</b>	8/18/2017 12:54:09
		Access Granted: Door Used, 1,2,D1: Front Door	
		Front Door (8000)	

## Miscellany

- On the configuration dialog, devices and events are only saved when the source setup is sent to Ocularis.
- To see additional data on the events being processed, add an xml node to the configuration settings file in C:\ProgramData\OnSSI\OnSSIFlexEventsService\OnSSIEventsConfig.xml

```
<debug/>
```

- The default polling interval is five seconds, this was suggested by Jeremy Brown at Open Options. The polling interval can be changed by adding an xml node to the configuration settings file in C:\ProgramData\OnSSI\OnSSIFlexEventsService\OnSSIEventsConfig.xml

```
<pollrate>8000</pollrate>
```

The value should be in milliseconds.

## Contact Information

### On-Net Surveillance Systems (OnSSI)

One Blue Plaza

7th Floor

P.O. Box 1555

Pearl River, NY 10965

Website:	<a href="http://www.onssi.com">www.onssi.com</a>	
General:	<a href="mailto:info@onssi.com">info@onssi.com</a>	845.732.7900
Fax:		845.732.7999
Sales Support:	<a href="mailto:sales@onssi.com">sales@onssi.com</a>	845.732.7900 x 1
PreSales Support	<a href="mailto:se@onssi.com">se@onssi.com</a>	845.732.7900 x 2
Technical Support:	<a href="mailto:support@onssi.com">support@onssi.com</a>	845.732.7979
Training:	<a href="mailto:training@onssi.com">training@onssi.com</a>	845.732.7900 x 4
Marketing:	<a href="mailto:marketing@onssi.com">marketing@onssi.com</a>	845.732.7900 x 5