



# Ocularis 5

## Legacy Migration Guide

Ocularis 5 Legacy Migration Guide



**On-Net Surveillance Systems, Inc.**  
One Blue Hill Plaza, 7<sup>th</sup> Floor, PO Box 1555  
Pearl River, NY 10965  
Phone: (845) 732-7900 | Fax: (845) 732-7999  
Web: [www.onssi.com](http://www.onssi.com)

Ocularis 5.5

000012142017-1140-5.5.0.238

**Legal Notice**

This product manual is intended for general information purposes only, and due care has been taken in its preparation.

Any risk arising from the use of this information rests with the recipient, and nothing herein should be construed as constituting any kind of warranty.

© 2002-2018 On-Net Surveillance Systems, Inc. All rights reserved. OnSSI and the 'Eye' logo are registered trademarks of On-Net Surveillance Systems, Inc. Ocularis, Ocularis Client, Ocularis Client Lite, Ocularis Video Synopsis, NetEVS, NetDVMS, NetDVR, ProSight, NetGuard, NetGuard-EVS, NetSwitcher, NetMatrix, NetCentral, NetTransact, NetPDA and NetCell are trademarks of On-Net Surveillance Systems, Inc. All other trademarks are property of their respective owners.

On-Net Surveillance Systems, Inc. reserves the right to change product specifications without prior notice.

US patent # 8390684 B2 for Ocularis Client

Patents Applied For in the U.S. and Abroad

*Ocularis 5 Legacy Migration Guide*

Ocularis 5 Legacy Migration Guide

# Table of Contents

- BEFORE YOU MIGRATE..... 4**
- ARE MY CAMERAS SUPPORTED? ..... 4**
- NEW TERMINOLOGY & ARCHITECTURE..... 4**
- LICENSING..... 5**
  - LICENSE THE BASE ..... 5
  - LICENSE THE RECORDING COMPONENT..... 5
- HOW STORAGE WORKS WITH OCULARIS V5 ..... 6**
  - WHAT ABOUT ARCHIVING?..... 6
  - TO DEFINE A ZONE(VIDEO STORAGE LOCATION) DURING SOFTWARE INSTALLATION ..... 6
  - TO ADD A ZONE (VIDEO STORAGE LOCATION) AFTER SOFTWARE INSTALLATION..... 7
    - Recommendation for Zone Settings..... 9
    - Network Authorization..... 9
    - Save Changes ..... 9
- WHAT DATA IS MIGRATED? .....10**
  - COMPONENTS OF OCULARIS..... 10
- SAMPLE MIGRATION SCENARIOS .....11**
  - Scenario #1: Upgrade Ocularis Base, Client and Administrator Only - no new cameras ..... 12
  - Scenario #2: Upgrade Ocularis Base, Client, Administrator and add new cameras ..... 13
  - Scenario #3: Installation of a brand new system using Ocularis Ultimate. .... 14
  - Scenario #4: Installation of a brand new system using Ocularis Enterprise ..... 17
  - Scenario #5 Installation of a brand new system using Ocularis Professional with 128 cameras or less. .... 19
  - Scenario #6 Installation of a brand new system using Ocularis Professional with more than 128 cameras. .... 21
  - Scenario #7: You have upgraded your existing system's Base, Administrator and Client to v5 and would like to add new cameras but the new cameras are not yet supported with Ocularis 5..... 24
  - Scenario #8: Migrate Cameras From an RC-P, RC-I or RC-C Recorder and Retain Recorded Video..... 25
  - Scenario #9: Migrate Cameras From an RC-L or RC-E Recorder ..... 27
  - Scenario #10: Migration with NetDVMS ..... 28

## Ocularis 5 Legacy Migration Guide

### Before You Migrate

In most cases, migrating to Ocularis 5 is easy and straightforward. This document identifies some of the processes used in specific scenarios and details some of the nuances of the new technology. Be sure you read this entire document and that you understand these topics:

Are My Cameras Supported?

New Terminology & Architecture

Licensing

How Storage Works with Ocularis v5

What Data is Migrated?

Contact OnSSI Technical Support if you have any questions whatsoever.

### Are My Cameras Supported?

The supported cameras and devices for Ocularis 5 may be different from older versions of Ocularis. Therefore, it is important that you verify whether your existing or potential cameras are supported. Use this link <http://onssi.com/supported-devices-50/> to look up your device in the supported devices list. If you are unsure, please contact OnSSI Technical Support to confirm whether your devices are supported.

### New Terminology & Architecture

Ocularis 5 contains new terminology for recording system components.

- **Core**— This is a component which manages the configuration settings for the recording system. It runs as a service. The Ocularis model determines what type and how many cores you may have.

**Ocularis Ultimate** - in this distributed, centrally managed model, the first component you install is the 'Master' Core. There is only one Master Core in this model. Additional Cores may be installed and these are known as 'Slave' Cores. A Slave Core will take over in the event the Master Core service or hardware goes down. There may be more than one Slave Core in this configuration.

**Ocularis Enterprise** - this model shares the same management properties as Ultimate in that there is only one Master Core and there may be one or more Slave Cores for redundancy.

**Ocularis Professional** - this model is not centrally managed so therefore each computer which houses a recording component must also contain a 'Master' Core. On the first recording server, install a Master Core and Device Manager (DM). This server will support up to 128 devices (pending hardware resources). Once any limits are reached, on a second server, install another Master Core and DM and add additional cameras to this server. Each Master Core requires a unique SLC obtainable from OnSSI at no additional charge. This model does not support redundancy for the configuration database and therefore does not support Slave Cores.

## Ocularis 5 Legacy Migration Guide

- **Device Manager (DM)** – This service communicates with devices (cameras and encoders) and clients. It also manages video storage. This is what we traditionally call a 'recorder'. There may be many DMs in an installation.

In **Ocularis Ultimate**, you may have as many DMs in the system as needed. They may reside alone on a server or with another component, such as a Slave Core. You may set up one DM to be a failover (redundant recorder) for another DM in the event of a DM failure. This will provide failover recordings in the event the primary DM service or hardware goes down. Additionally, you may also set up a DM whose sole purpose is to act as a failover DM in the event any system DM should fail. Hardware resources for DMs used as a failover must be sized properly so that it can support the maximum number of resources it can potentially manage. Ultimate is the only v5 model that supports video failover.

In **Ocularis Enterprise**, you may have as many DMs in the system as needed. They may reside alone on a server or with another component, such as a Slave Core.

In **Ocularis Professional**, there is a Master Core and DM on each recording server system-wide.

- **Ocularis Recorder Manager** – This is the software application used to configure the Core and DM(s). With **Ocularis Ultimate & Enterprise**, you use the Ocularis Recorder Manager to log in to the sole Master Core. This provides you visibility to configure all Cores and DMs in the system. With **Ocularis Professional**, use this application to log into each Master Core as you can only configure one DM at a time.

## Licensing

With Ocularis 5, there are two components that require licensing: Ocularis Base and the recording component Master Core(s).

### License the Base

For any Ocularis model, during software installation, you are required to provide the Ocularis Base Software License Code (SLC). This is a number which begins with '905' and is entered into an application on the Base computer called 'Ocularis License Activation'. (Deactivate the old '901' SLC and enter the new '905' SLC when upgrading.) The licensing must be done either before or immediately after the installation of Ocularis Base. There are two methods of validating the SLC - online or offline. If the computer housing Ocularis Base has internet connectivity, online activation is recommended. If this computer does not have internet connectivity, use the offline method at any time of the day or night. Refer to the *Ocularis Installation and Licensing Guide* for detailed instructions on how to license.

To deploy other Ocularis components such as the recorder, Client and Administrator, refer to the detailed instructions found in the *Ocularis Installation and Licensing Guide*.

### License the Recording Component

The license for the recording component controls certain features as well as the number of streams that the system may use. Rather than register each camera license, Ocularis v5 applies the Software License Code (SLC) to the Master Core Server of the Ocularis 5 recording component. Once licensed, you can add or remove as many cameras within the maximum limit of streams purchased. This SLC has a prefix of '500' or '501' and may also be licensed using an online or offline method. Once licensed, no further licensing steps need to be taken unless the license changes (e.g. you purchase additional video channels) or you need to move the software to different hardware. Since it is only the 'Master' Core Server that is licensed, for **Ocularis Ultimate** and **Ocularis Enterprise**, this step need only be done once (pending changes as previously stated).

## Ocularis 5 Legacy Migration Guide

For **Ocularis Professional**, since there may be more than one Master Core Server, each Master Core must be licensed with its own unique SLC. If you need additional SLCs for a PRO Master, contact OnSSI Sales. These are available at no extra cost.

## How Storage Works with Ocularis v5

With Ocularis 5, video that is recorded uses an algorithm whereby each stream caches 2 MB blocks into memory before the data is written to storage. Using this methodology, not only is the data transfer more efficient, but it allows for the use of slower, relatively less expensive hard drives (as compared to Ocularis v4 and prior recorders). This can provide a savings of the overall cost of the surveillance system hardware. Additionally, the data is written once and stored for as long as the customer desires based on configuration settings in the software. If more storage required, one or more additional storage locations may be defined. Network, SAN, DAS and RAID systems are supported. In this case, the software manages where the video from each camera is saved based on a load balancing formula and indexing of the data. Each individual storage location is called a 'zone'. There may be many zones for each Device Manager (DM). Video from a camera, therefore, may actually be stored on several different drive locations. The DM manages this process and always knows where the video is located.

We recommend a maximum of ten zones per DM and fewer large zones are more efficient than many small zones. Storage locations/zones may be defined during the installation of a Device Manager or they may be added or modified after the software has been installed.

When the Device Manager's storage capacity for all zones reaches 89%, a message is displayed in Ocularis Recorder Manager indicating this. When 90% is reached, a ring buffer system will begin to delete older image data in order to be able to record new data. Image data for prioritized cameras are the last to be deleted. Therefore, if you find that you frequently reach storage capacity, add another zone or decrease the retention period for Standard and/or Alarm Recordings.

### **What About Archiving?**

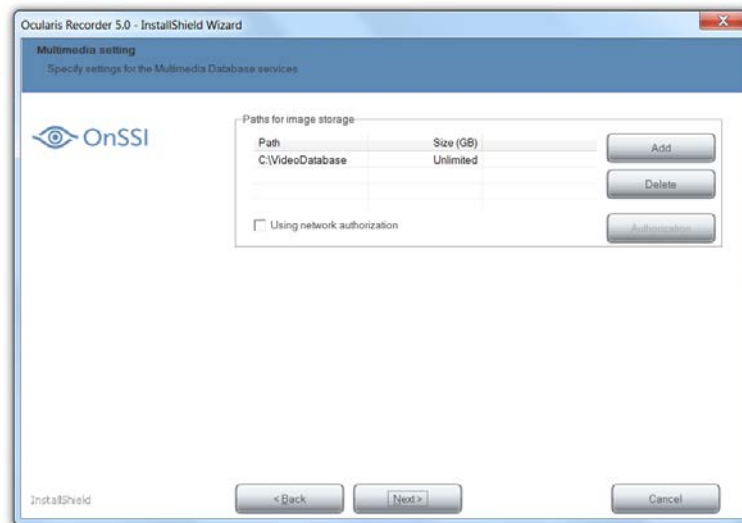
With Ocularis 5's storage technology, since you may store 'Live' video anywhere, there is no need to move or archive video. The methodology used to write data (as described above in 'How Storage Works') allows video to be stored once for as long as the customer wants. No archiving is required.

### **To Define a Zone(Video Storage Location) During Software Installation**

Storage locations/zones may be defined during the installation of a Device Manager or they may be added or modified after the software has been installed. A minimum of one zone must be configured when the Device Manager (DM) software is installed. The default location for this zone is: **c:\VideoDatabase**. It is recommended to change this default to a volume that is dedicated for the sole purpose of housing video recordings. We advise against sharing physical hard drive space with other applications (such as on a c:\ drive that houses operating systems and other applications). In the event that there is more than one DM in the system, zones are configured for each DM individually.

## Ocularis 5 Legacy Migration Guide

During installation of a Device Manager, the following screen will appear:



This is the screen where you define a storage zone at the time of software installation. Click **Add** to include an additional zone to those already listed. Select the zone and then click **Delete** to remove a zone from the list.

In the case of a zone located on a shared network drive, you must identify it via its full UNC path, not a mapped drive letter. For instance:

`\\servername\sharename\path`

is a valid UNC path.

`m:\myfolder`

is not a valid path.

It is recommended to check the box 'Unlimited' for the Maximum Size of the zone.

Keep in mind that network locations may require a login username and password. If so, click 'Using network authentication' and then provide this information.

Click **Next** in the wizard and proceed with the installation.

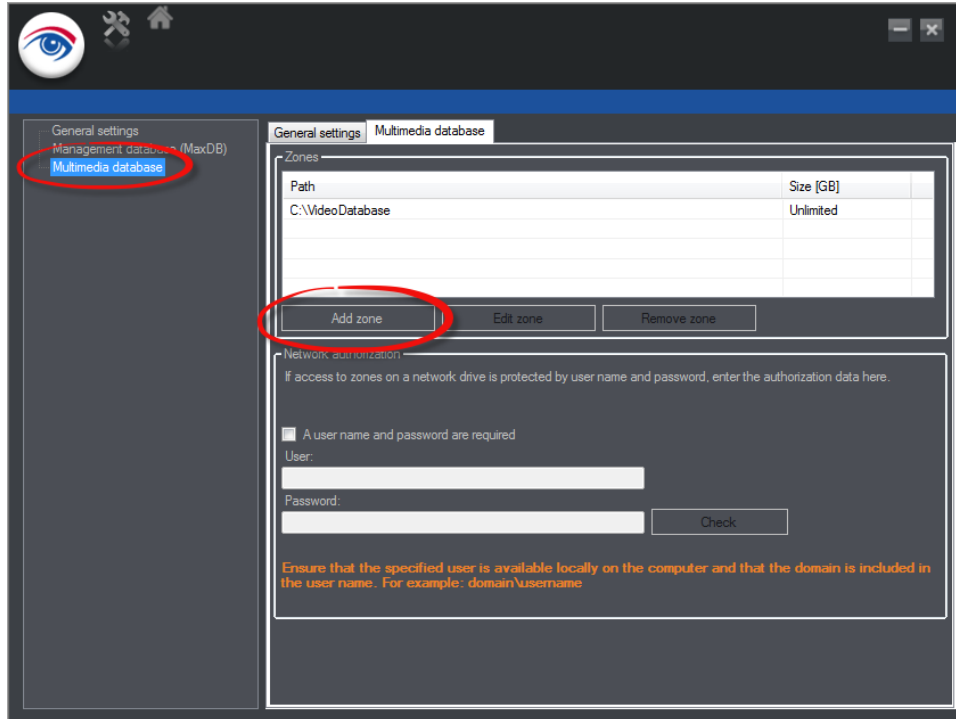
### **To Add a Zone (Video Storage Location) After Software Installation**

If you discover that you are running low on disk storage space for video, you may decide to decrease the retention time for the video or you may add one or more zones to increase the storage space. You may add or modify zones (storage locations) for the devices associated for a Device Manager at any time. On the computer that houses the Device Manager, open the recorder utility: Ocularis Recorder Administration Tool



Ocularis 5 Legacy Migration Guide

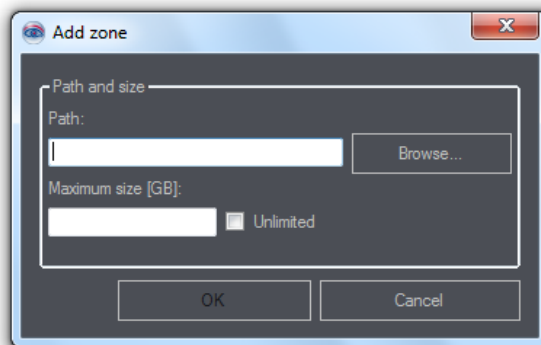
From the Windows Start menu → All Programs → OnSSI → Ocularis Recorder → Ocularis Recorder Administration Tool



Any configured zones are listed in the zones table.

Click **Add zone** to provide the specifics for additional storage.

In the resulting pop-up, provide a path for the additional zone. You may click the **Browse** button to navigate to the location if desired. However, if the zone you are adding is a network location, you must type the full [UNC path](#) to the server and folder where you want the zone assigned.



Click **OK** to save the new zone settings.

Ocularis 5 Legacy Migration Guide


**Recommendation for Zone Settings**

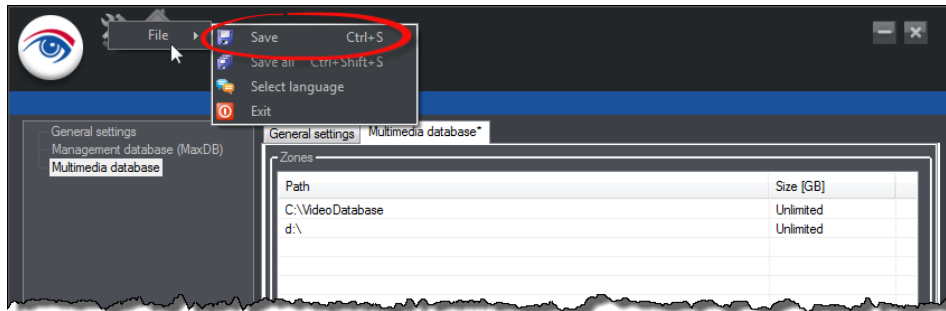
We recommend using a dedicated volume for a zone, preferably not the C: drive. Zones should be configured for a sub-folder and not the root of the drive.

**Network Authorization**

If the zone you have added is on the network, check the box 'A user name and password are required' and then provide these credentials. The same credentials must apply to any network zone managed by the DM.

**Save Changes**

Click the settings icon,  and then click **Save** to save changes. Then restart all services on the Device Manager using the *Ocularis Recorder Service Manager* to apply the changes. The DM will automatically use the additional storage with no additional steps necessary.



## Ocularis 5 Legacy Migration Guide

# What Data is Migrated?

When you are moving forward with Ocularis 5 from an existing Ocularis installation, you should be aware of what data is upgraded and what data is not.

Since Ocularis is a componentized suite of products, you need to understand which components maintain configuration and which do not.

### Components of Ocularis

**Ocularis Base** - this is the primary database that maintains configuration data, user data, permissions, maps and events. It provides authentication when users log in to the system and controls what permissions and access for each user account. Upgrades of Ocularis Base maintain existing configuration.

**Ocularis Administrator** - this is the software used to configure Ocularis Base. It is used by administrators of the surveillance system. Upgrades of Ocularis Administrator maintain existing configuration.

**Ocularis Client** - this is the software used to view video. It is used by operators of the surveillance system. Upgrades of Ocularis Client maintain existing configuration.

**Recorders** - this is the component that controls the settings for the cameras as well as any storage settings for the video. This is also called a recorder or in Ocularis v5, a Device Manager (DM). There is no upgrade path for pre-v5 recorders. The older recorder will continue to work as is with v5 but any new cameras will need to be added to a newly installed Ocularis 5 recorder (Core+DM).

**Recorder Proxy** - this component is used to send event data from a recorder to Ocularis Base, manage multiple live streams, update the Base with recorder changes and more! It is usually installed on the same computer as the recorder (i.e. master core). Like the recorder, the recorder proxy does not have an upgrade path to v5. It is unique to the recorder. Therefore, use the legacy event proxy with the legacy recorder for the duration that you still use cameras on the legacy recorder. When you implement cameras on a new v5 recorder, you will need to install and configure a v5 recorder proxy. Each Master Core requires its own recorder proxy. Therefore, only one recorder proxy is required in **Ocularis Ultimate** and **Ocularis Enterprise**. For **Ocularis Professional**, install a recorder proxy for each Master Core.

Ocularis 5 Legacy Migration Guide

## Sample Migration Scenarios

The following scenarios depict common installations and options as to how to move forward with Ocularis 5 from a legacy system. These scenarios are not exhaustive and your situation may be different. Contact OnSSI if you have any questions or concerns about how to evaluate your current installation and potential scenarios when moving to Ocularis 5.

[Scenario #1: Upgrade Ocularis Base, Client and Administrator Only - no new cameras](#)

[Scenario #2: Upgrade Ocularis Base, Client, Administrator and add new cameras](#)

[Scenario #3: Installation of a brand new system using Ocularis Ultimate.](#)

[Scenario #4: Installation of a brand new system using Ocularis Enterprise.](#)

[Scenario #5: Installation of a brand new system using Ocularis Professional with 128 cameras or less.](#)

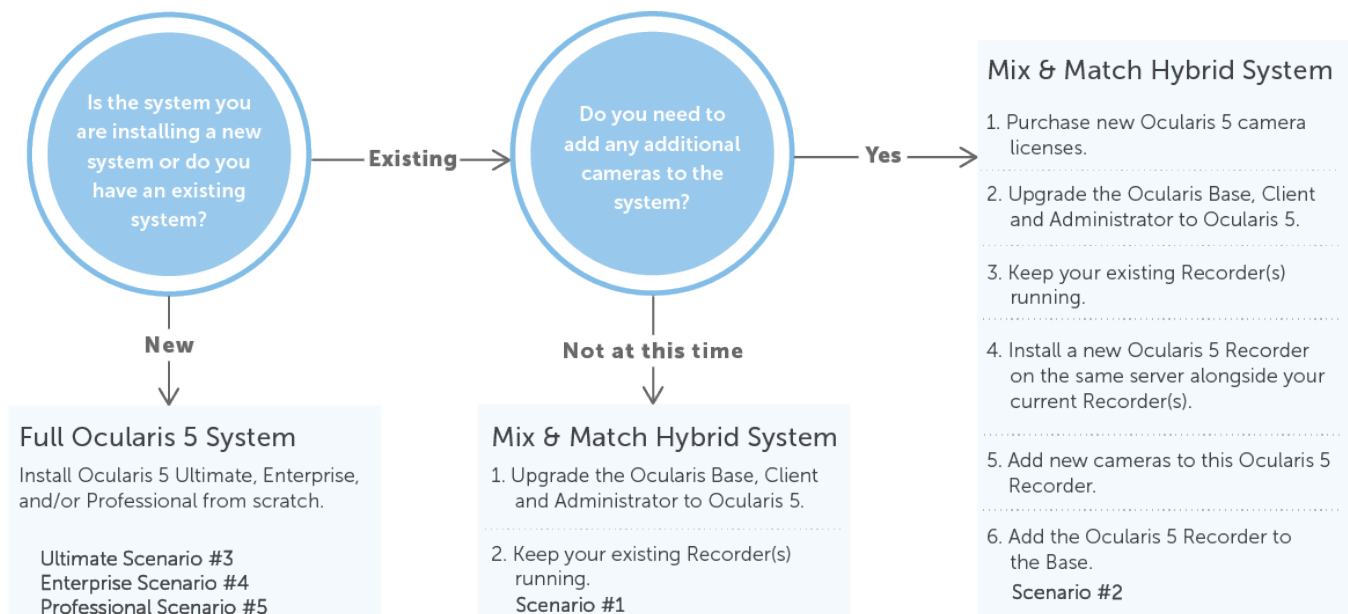
[Scenario #6: Installation of a brand new system using Ocularis Professional with more than 128 cameras.](#)

[Scenario #7: You have upgraded your existing system's Base, Administrator and Client to v5 and would like to add new cameras but the new cameras are not yet supported with Ocularis 5](#)

[Scenario #8: Migrate Cameras From an RC-P, RC-I or RC-C Recorder and Retain Recorded Video](#)

[Scenario #9: Migrate Cameras From an RC-L or RC-E Recorder](#)

[Scenario #10: Migration with NetDVMS](#)

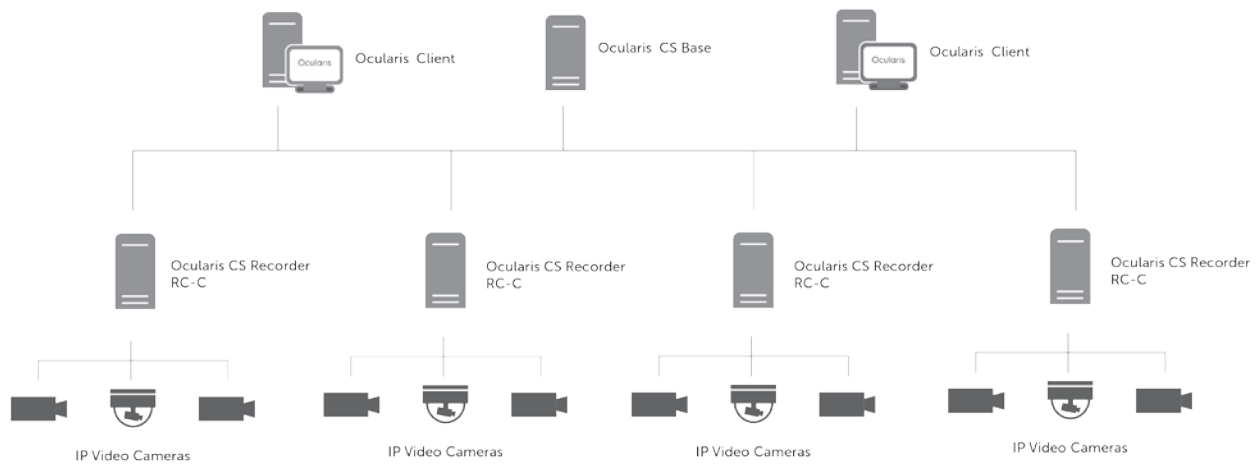


Ocularis 5 Legacy Migration Guide

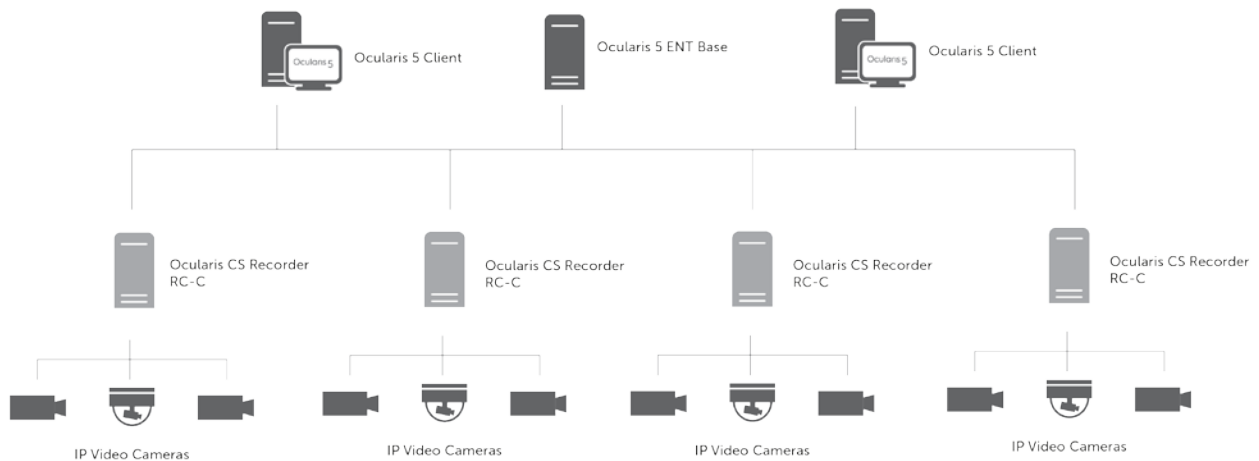
**Scenario #1: Upgrade Ocularis Base, Client and Administrator Only - no new cameras**

Your current Ocularis system is Ocularis 3.x or 4.x. You can move forward with Ocularis 5 by upgrading the Ocularis Base, Administrator and Client components to v5 but leave the recorder(s) as is. Upgrading a Base to v5 requires a new SLC. (Deactivate the old '901' SLC and enter the new '905' SLC when upgrading.) The diagrams below show an example for a CS system.

*Before*



*After*



In this scenario, you gain the benefit of having the latest and greatest Ocularis technology installed without having to migrate your recorders. This scenario will work with any legacy model of Ocularis (PS, IS, CS, LS or ES).

Ocularis 5 Legacy Migration Guide

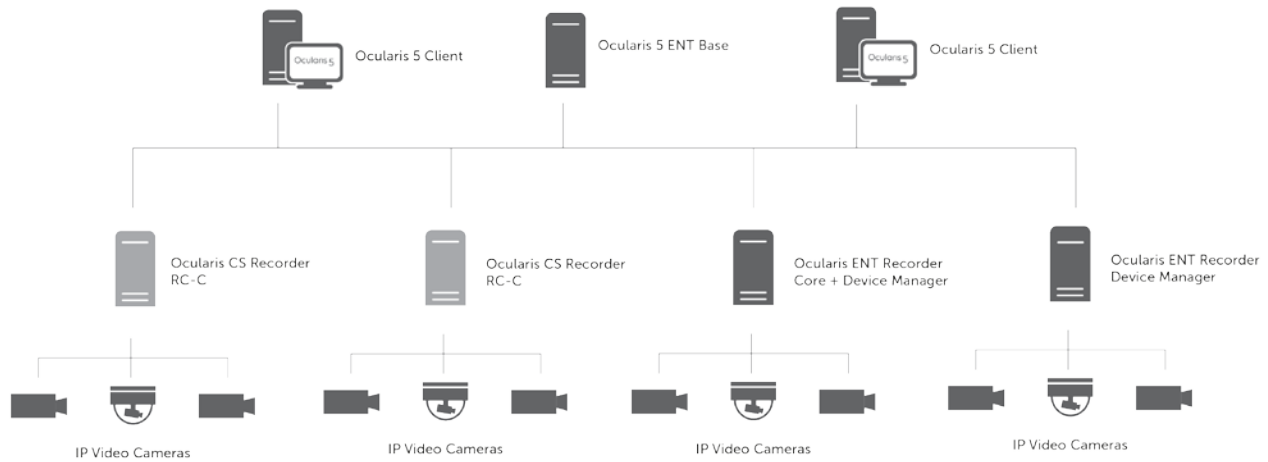
Click to return to [Sample Migration Scenarios](#)

**Scenario #2: Upgrade Ocularis Base, Client, Administrator and add new cameras**

Continuing with Scenario #1, if / when you need to add additional cameras to the system, check to see that the camera model is supported in [Ocularis v5](#) .

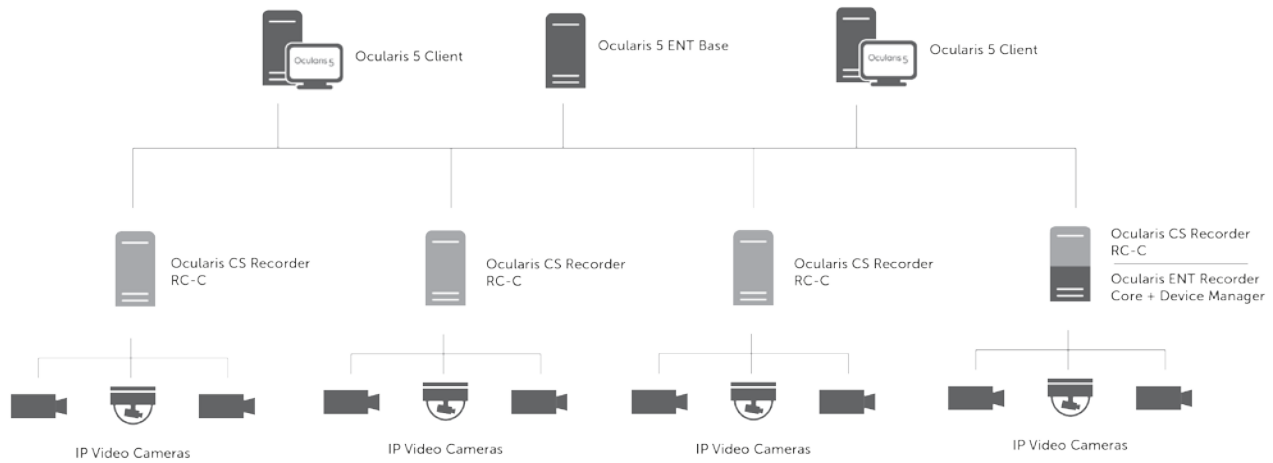
If the cameras are supported with Ocularis 5, purchase additional camera licenses for Ocularis 5 and update the Ocularis Base SLC. Install the v5 recording component from the installer website located on Ocularis Base. The component to install will be the Core (Master), Device Manager and the software used to configure both, the Ocularis Recorder Manager. These may be installed on a new computer or alongside one of the legacy recorders already installed. (provided that the hardware can support both recorders). The example shown here is for an Enterprise system.

After (when adding 5 cameras to an ENT recorder on a new computer):



After (when adding 5 cameras to an ENT recorder on a computer shared with RC-C):

## Ocularis 5 Legacy Migration Guide



Click to return to [Sample Migration Scenarios](#)

### Scenario #3: Installation of a brand new system using Ocularis Ultimate.

Ocularis Ultimate is unique in that it contains several features not found in other models. These include (but are not limited to): failover for video recordings, edge recording, video grooming and multicasting from the camera. Ultimate systems tend to be larger and therefore can be as complex or as simple as desired.

1. With any Ocularis v5 model, the first component you install is Ocularis Base.
2. After the Base is licensed, go to the PC on which you want to install additional components (if other than the Base computer).
3. Launch the Ocularis Component Downloads webpage located on the Base.
4. Download and install other Ocularis components such as: Administrator and Client.
5. Then, download the Ocularis Recorder component. When you run the installation, install a Master Core and Ocularis Recorder Manager. If you also want a recorder included in this installation, include a Device Manager. This is the only Master Core in this model. The Master Core manages the configuration data for the entire recording system.
6. If you want to provide redundancy for the Master Core, on another computer, follow the same steps as step 5 but use the 'Custom' installation option and choose 'Slave Core' rather than 'Master Core'. During installation, you will provide the IP address of the Master Core and this establishes redundancy. Anytime the Master Core service goes offline, the Slave will take over. If desired, you can add other components to this computer, such as a DM.
7. If you want to use video recording failover, at least one additional DM must be installed in the system. On another PC, follow the same steps as step 5, and select 'Device Manager' in the installation setup screen. (or use the 'Custom' option and select Device Manager).

*Ocularis 5 Legacy Migration Guide*

8. After installation, use the Ocularis Recorder Manager application to log into the Master Core.
  - a. License the Master Core by selecting the Info menu ... Activate license. (if you do not have internet access see the document *Ocularis Installation and Licensing Guide* for alternate instructions). Fill out the form and click OK. You are done! No further licensing is required for the recording component unless you decide later to purchase additional camera licenses.
  - b. In the Server section, choose a device manager.
  - c. In the drop-down, 'Server for redundant image recording' , select another device manager<sup>1</sup> you wish to take over in the event this device manager should go offline.
  - d. Add cameras while logged in to the Master Core. You can assign which device manager the camera is associated with during installation.
  - e. The Ocularis Recorder Manager provides visibility to all cameras and all DMs on the system with the single log in.

Here is a sample diagram for a complex Ultimate system:

**Ocularis Ultimate**

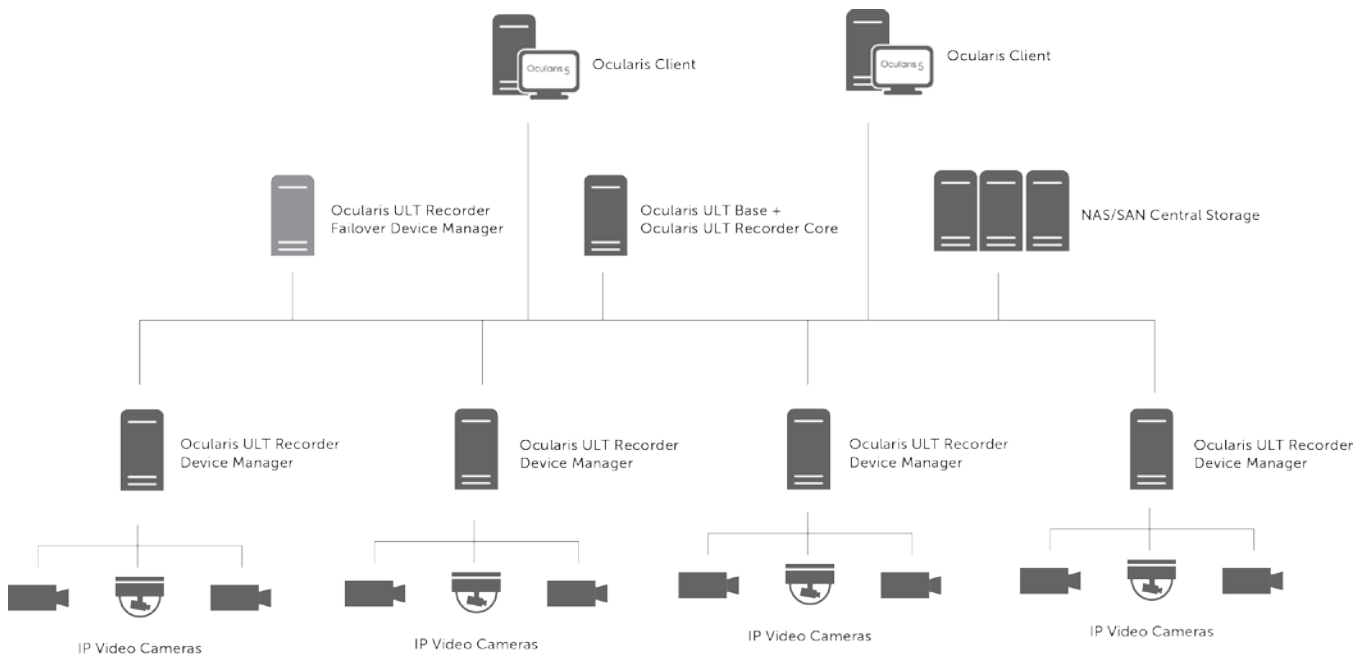
---

<sup>1</sup> A Device Manager that takes over for another DM must have enough hardware resources to accommodate all devices that it could potentially support.

---



Ocularis 5 Legacy Migration Guide



Click to return to [Sample Migration Scenarios](#)

*Ocularis 5 Legacy Migration Guide***Scenario #4: Installation of a brand new system using Ocularis Enterprise.**

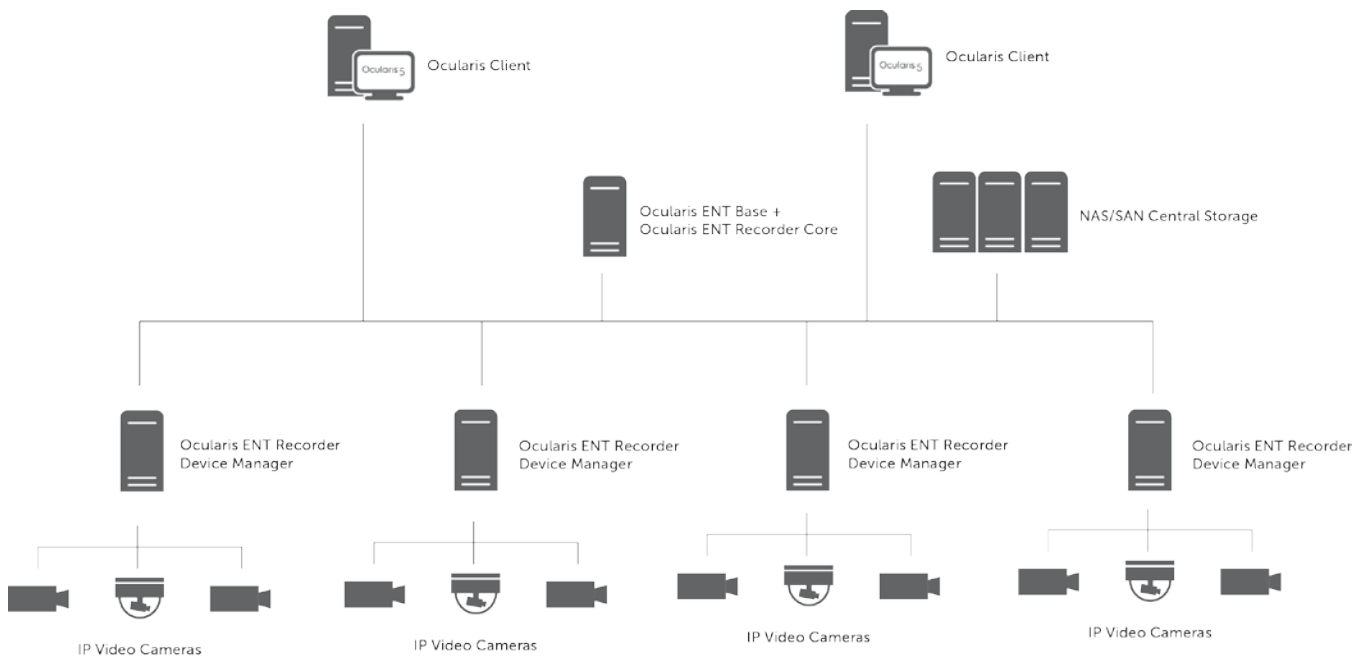
Ocularis Enterprise is similar to Ultimate in that it is also a centrally managed system. It also supports redundancy of the Core configuration but not the other features listed in Scenario 3.

1. With any Ocularis v5 model, the first component you install is Ocularis Base.
2. After the Base is licensed, go to the PC on which you want to install additional components (if other than the Base computer).
3. Launch the Ocularis Component Downloads webpage located on the Base.
4. Download and install other Ocularis components such as: Administrator and Client.
5. Then, download the Ocularis Recorder component. When you run the installation, install a Master Core and Ocularis Recorder Manager. If you also want a recorder included in this installation, include a Device Manager. This is the only Master Core in this model. The Master Core manages the configuration data for the entire recording system.
6. If you want to provide redundancy for the Master Core, on another computer, follow the same steps as step 5 but use the 'Custom' installation option and choose 'Slave Core' rather than 'Master Core'. During installation, you will provide the IP address of the Master Core and this establishes redundancy. Anytime the Master Core service goes offline, the Slave will take over. If desired, you can add other components to this computer, such as a DM.
7. If you want, you can install additional DMs to support more cameras in the system. On another PC, follow the same steps as step 5, and select 'Device Manager' in the installation setup screen. (or use the 'Custom' option and select Device Manager).
8. After installation, use the Ocularis Recorder Manager application to log into the Master Core.
  - a. License the Master Core by selecting the Info menu ... Activate license. (if you do not have internet access see the document *Ocularis Installation and Licensing Guide* for alternate instructions). Fill out the form and click OK. You are done! No further licensing is required for the recording component unless you decide later to purchase additional camera licenses.
  - b. Add cameras while logged in to the Master Core. You can assign which device manager the camera is associated with during installation.
  - c. The Ocularis Recorder Manager provides visibility to all cameras and all DMs on the system with the single log in.

Ocularis 5 Legacy Migration Guide

Here is a sample diagram for an Enterprise system:

**Ocularis Enterprise**

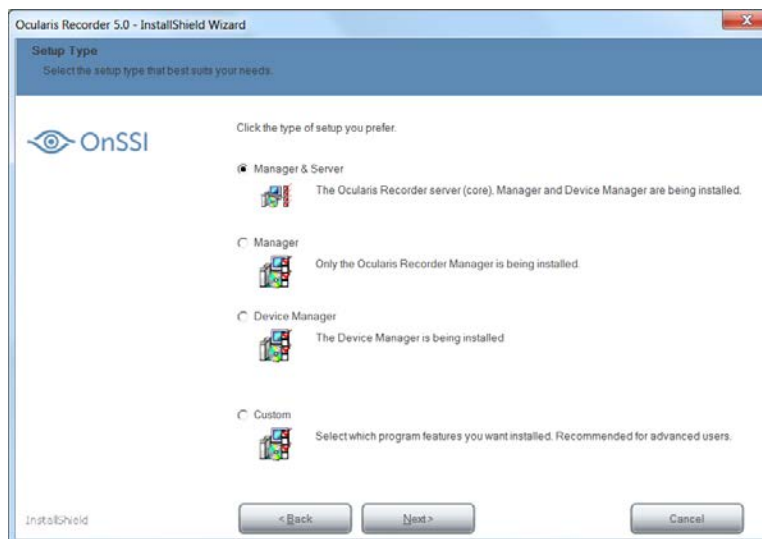


Click to return to [Sample Migration Scenarios](#)

*Ocularis 5 Legacy Migration Guide***Scenario #5 Installation of a brand new system using Ocularis Professional with 128 cameras or less.**

Ocularis Professional differs from the other v5 models in that it is not centrally managed system. It is limited to a maximum of 128 cameras per server (pending hardware resources) but additional servers may be added for an unlimited total number of cameras system-wide. It is also limited to ten concurrent users.

1. With any Ocularis v5 model, the first component you install is Ocularis Base.
2. After the Base is licensed, go to the PC on which you want to install additional components (if other than the Base computer).
3. Launch the Ocularis Component Downloads webpage located on the Base.
4. Download and install other Ocularis components such as: Administrator and Client.
5. Then, download the Ocularis Recorder component. When you run the installation, install a Master Core, Device Manager and Ocularis Recorder Manager. You can use the first option 'Manager & Server' to install all three components.

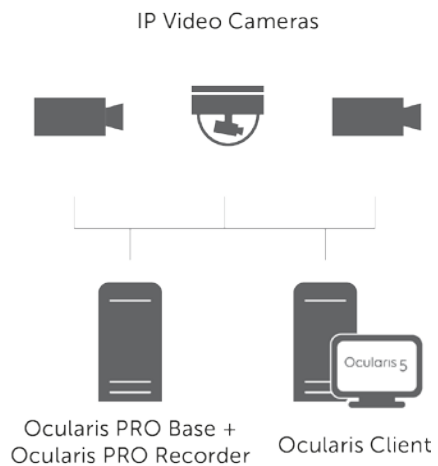


9. After installation, use the Ocularis Recorder Manager application to log into the Master Core.
  - a. License the Master Core by selecting the Info menu ... Activate license. (if you do not have internet access see the document *Ocularis Installation and Licensing Guide* for alternate instructions). Fill out the form and click OK. You are done! No further licensing is required for the recording component in this scenario unless you decide later to purchase additional camera licenses.
  - b. Add 128 cameras or less while logged in to the Master Core.

Ocularis 5 Legacy Migration Guide

Here is a sample diagram for a simple Professional system with all components installed on one PC:

**Ocularis Professional (128 cameras or less)**



Click to return to [Sample Migration Scenarios](#)

*Ocularis 5 Legacy Migration Guide***Scenario #6 Installation of a brand new system using Ocularis Professional with more than 128 cameras.**

As stated in Scenario #5, Ocularis Professional is limited to a maximum of 128 cameras per server (pending hardware resources). If you need more than 128 cameras and/or need to utilize an additional servers for cameras you may do so at no extra charge (except for the cameras licenses). In this example, we will assume we want 150 cameras total: 128 cameras installed on one server (as shown in Scenario #5) and 22 on a second server.

1. Prior to installation (during the ordering process), inform OnSSI that you will be installing 128 cameras on one server and 22 cameras on a second server. You will receive one Ocularis Base SLC (starts with 905) and two recorder SLCs (starts with 500 or 501).
2. Follow the steps 1-4 in Scenario #5.
3. Then, download the Ocularis Recorder component on the first server. When you run the installation, install a Master Core, Device Manager and Ocularis Recorder Manager. You can use the first option 'Manager & Server' to install all three components.
4. After installation, use the Ocularis Recorder Manager application to log into the Master Core (using its IP address for identification).
  - a. License the Master Core by selecting the Info menu ... Activate license. (if you do not have internet access see the document *Ocularis Installation and Licensing Guide* for alternate instructions). Fill out the form using the SLC for the 128 cameras and click OK.
  - b. Add 128 cameras while logged in to the Master Core. Log out of this Master Core.
5. On the second server, access the Ocularis Component Download webpage on the Base, and download and install another instance of the Ocularis Recorder component including a Master Core, Device Manager and Ocularis Recorder Manager. This is the only model that allows for multiple Master Cores.
6. After installation, use the Ocularis Recorder Manager application to log into the Master Core on the second server (using its IP address for identification).
  - a. License this Master Core by selecting the Info menu ... Activate license. (if you do not have internet access see the document *Ocularis Installation and Licensing Guide* for alternate instructions). Fill out the form using the second SLC for the 22 cameras and click OK.
  - b. Add 22 cameras while logged in to the Master Core. Log out of this Master Core.

With Ocularis Professional, you need to log into each Master Core separately in order to gain access to camera configuration.

1. In Ocularis Administrator Servers / Events tab, click Add to add the first Master Core to the Base.
2. When done, add the second (and any other subsequent) Master Core to the Base.
3. Configure cameras in Ocularis Administrator as usual (i.e. set camera privileges, assign to groups, add to views and maps, etc.)

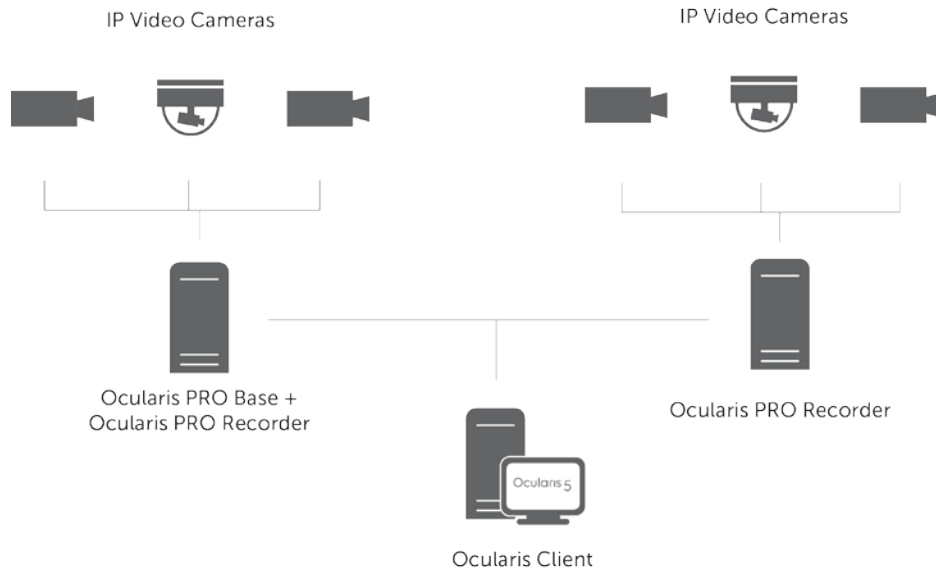
Ocularis Client operators will view all cameras without knowing on which server a particular camera is installed.

*Ocularis 5 Legacy Migration Guide*

Ocularis 5 Legacy Migration Guide

Here is a sample diagram for a Professional system with two Master Cores and two Device Managers:

**Ocularis Professional (150 cameras)**



Click to return to [Sample Migration Scenarios](#)



*Ocularis 5 Legacy Migration Guide***Scenario #7: You have upgraded your existing system's Base, Administrator and Client to v5 and would like to add new cameras but the new cameras are not yet supported with Ocularis 5**

If new camera(s) happens to not be supported in Ocularis v5 but are supported in the legacy recorder, you can move existing cameras from the older recorder that are supported to Ocularis 5 and then install the new camera on the legacy recorder.

Do the following: (this example assumes that your legacy recorder is RC-C, RC-I RC-P.

1. Purchase new licenses for v5 ENT.
2. Update the Ocularis SLC using the Ocularis License Activation application.
3. Update Ocularis Base, Client and Administrator.
4. In order to add the new camera to a legacy recorder a camera must first be deleted. Please note this will delete all video data associated with this camera. In the legacy recorder, locate a camera that is supported in Ocularis v5.
5. Delete the hardware by right clicking and choosing delete. Save changes.
6. Add the new camera to the legacy recorder and configure as desired using the Management Application. Activate the license on this camera. Save changes and exit.
7. Install the ENT recording components on a new or existing computer (Core-Master, DM and Ocularis Recorder Manager).
8. Add the supported camera that was previously on the legacy recorder to the DM using the Ocularis Recorder Manager. Configure settings as desired.
9. Add the new ENT Master Core to Ocularis Base using Ocularis Administrator. (Add Server in Servers / Events tab)
10. Refresh the legacy recorder on which you added the new camera.
11. For both cameras, you will need to set camera privileges in the Users / Privileges tab, edit or create new views using these cameras, modify any maps that may have used the old camera or add the new camera as desired to maps and configure events using either of the cameras.

Click to return to [Sample Migration Scenarios](#)

*Ocularis 5 Legacy Migration Guide***Scenario #8: Migrate Cameras From an RC-P, RC-I or RC-C Recorder and Retain Recorded Video**

Although it is not absolutely necessary you may migrate some or all of your cameras to Ocularis 5. If you choose to do so, this process can be done at a reasonable pace based on the needs of the customer.

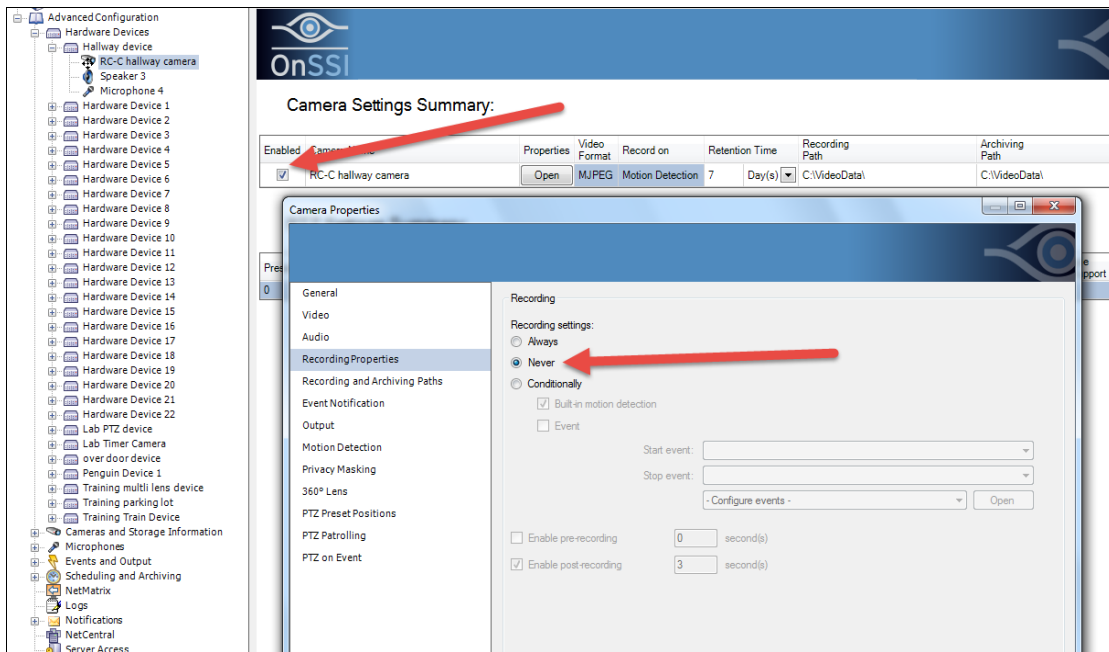
You may migrate cameras one at a time or several in the same session. The steps listed here allow you to save any recorded video on the legacy recorder so that it can be accessed later if needed.

If you do not want to retain recorded video, see Scenario #3, 4 or 5 (depending on your Ocularis model) on installing a new system (after uninstalling the legacy recorder). The steps below are not necessary. Simply install the camera on the Ocularis 5 recorder and configure permissions, views, maps and events using Ocularis Administrator.

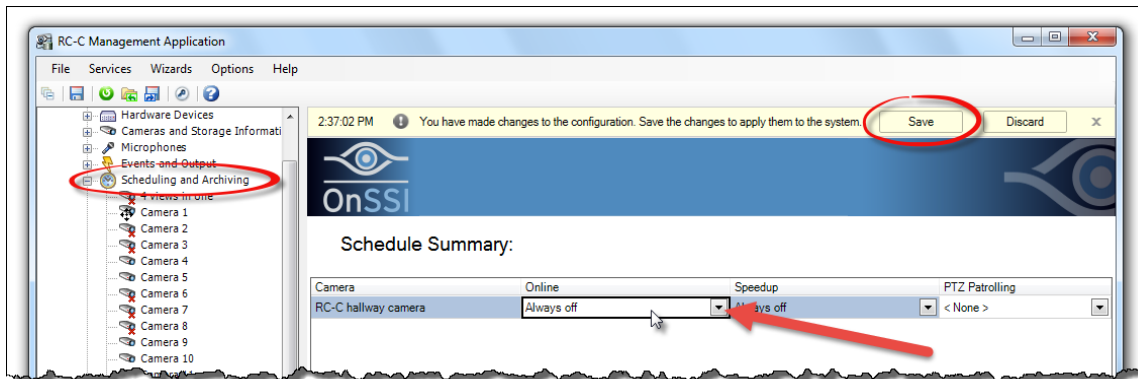
In order to access recorded video from a camera that will be moved to Ocularis 5, you need to unschedule the recording of video from the camera.

1. For a camera you wish to migrate, add it to the Ocularis v5 recorder and configure settings.
2. Add or Refresh this recorder in Ocularis Administrator.
3. In the Servers pane of the Servers / Event tab in Ocularis Administrator, locate the legacy recorder, expand the camera list and find the camera you wish to migrate. Uncheck the license checkbox from this camera.
4. Locate the Ocularis 5 recorder in the Servers pane, expand the camera list and check the license checkbox for the migrated camera. You simply moved the Ocularis license from one camera to the other.
5. Use Ocularis Administrator to configure camera privileges for the new camera and add it to any desired views. Optionally, configure maps and events with the new camera.
6. Verify that you are seeing video from the camera and the recordings are being saved per configuration. The camera is still streaming to both recorders at this time.
7. When you are ready, open the Management Application.
8. Keep the camera enabled. DO NOT DELETE the hardware. In the camera's Recording Properties, change the settings to record 'Never'. Save changes.

Ocularis 5 Legacy Migration Guide



- 9. Then, in the 'Scheduling and Archiving' node, select the camera and set the Online schedule to 'Always off'. Save changes.



Any recordings already made will be saved for the configured archive period.

- 10. Repeat these steps until all cameras are migrated from the legacy recorder to Ocularis 5.

Video from the disabled camera on the legacy recorder may still be accessed using Ocularis Client in Limited Mode.

Click to return to [Sample Migration Scenarios](#)

## Ocularis 5 Legacy Migration Guide

### **Scenario #9: Migrate Cameras From an RC-L or RC-E Recorder**

Although it is not absolutely necessary you may migrate some or all of your cameras to Ocularis 5. If you choose to do so, this process can be done at a reasonable pace based on the needs of the customer.

You may migrate cameras one at a time or several in the same session. The steps listed here allow you to save any recorded video on the legacy recorder so that it can be accessed later if needed.

If you do not want to retain recorded video, see Scenario #3, 4 or 5 (depending on your Ocularis model) on installing a new system (after uninstalling the legacy recorder). The steps below are not necessary. Simply install the camera on the Ocularis 5 recorder and configure permissions, views, maps and events using Ocularis Administrator.

In order to access recorded video from a camera that will be moved to Ocularis 5, you need to unschedule the recording of video from the camera. This may be done in several different ways in these recorders. Here is just one example of how it might be done.

1. In the Management Client, create two new device groups called 'Non-migrated Cameras' and 'Migrated v5 Cameras'
2. Add all cameras to the 'Non-migrated Cameras' group (since no cameras were yet moved).
3. Review any rule you have that controls video recording on the cameras (e.g. Always Record, Record on Motion, etc). Modify the rule to use the 'Non-migrated Cameras' group (instead of 'All Cameras').
4. Make sure the 'Start Feed Rule' includes all cameras. You need this rule in order to be able to view recorded video from the camera after it is migrated to v5.
5. Save settings and test the rules to be sure you are recording video according to the rule(s).
6. For a camera you wish to migrate, add it to the Ocularis v5 recorder and configure settings.
7. Add or Refresh this recorder in Ocularis Administrator.
8. In the Servers pane of the Servers / Event tab, locate the RC-E recorder, expand the camera list and find the camera you wish to migrate. Uncheck the license checkbox from this camera.
9. Locate the Ocularis 5 recorder in the Servers pane, expand the camera list and check the license checkbox for the migrated camera. You simple moved the Ocularis license from one camera to the other.
10. Use Ocularis Administrator to configure camera privileges for the new camera and add it to any desired views. Optionally, configure maps and events with the new camera.
11. Verify that you are seeing video from the camera and the recordings are being saved per configuration. The camera is still streaming to both recorders at this time.
12. When you are ready, use the Management Client and move the camera from the 'Non-migrated Cameras' group to the 'Migrated v5 Cameras' group. Save changes. Per the rule(s), new video from the camera will not be recorded. Existing recorded video will be retained for the configured archive duration. You may access this video by using Ocularis Client in Limited Mode and log in to the Management Server directly.
13. Repeat steps 6 -12 for each camera as you migrate it from RC-L/E to Ocularis 5. Eventually, you will no longer have any cameras in the 'Non-migrated Cameras' group.
14. Wait until the recorded video is purged due to aging settings.
15. Then you can uninstall RC-E and repurpose the hardware.

Click to return to [Sample Migration Scenarios](#)

## Ocularis 5 Legacy Migration Guide

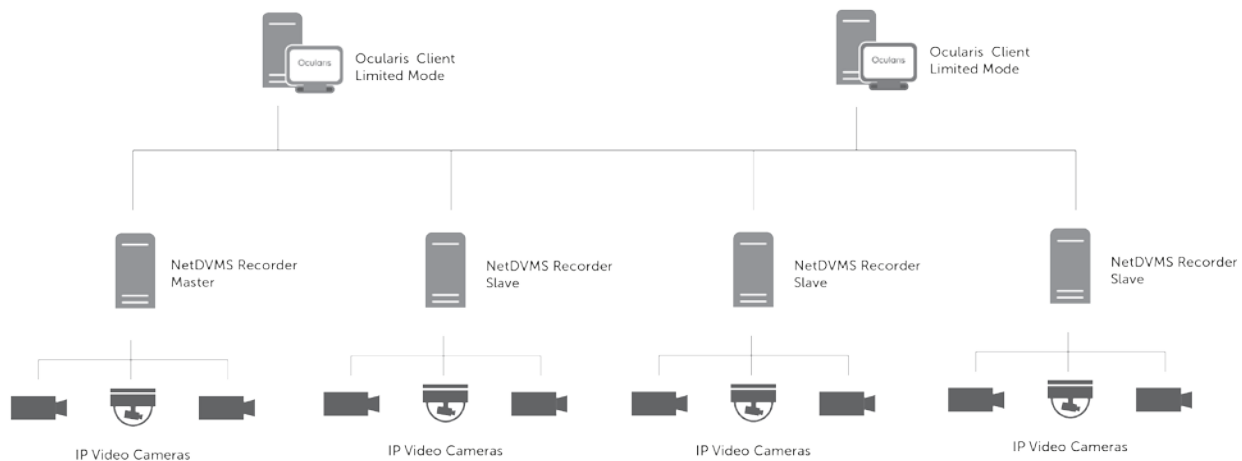
### Scenario #10: Migration with NetDVMS

Please note: since NetDVMS is no longer eligible for technical support, it is advised to migrate all cameras from NetDVMS servers to Ocularis 5.

If you are using NetDVMS you are not using Ocularis Base. Instead, you use Ocularis Client in Limited Mode to log directly into the recorder. In this scenario, you have three NetDVMS servers, one is configured as a master and the others are slaves.

Upgrade to v5 and migrate from NetDVMS at your own pace.

Before:



1. On either a separate server or one of the NetDVMS servers (check hardware specs), install Ocularis 5 Base. The image server port on the NetDVMS recorder may need to be changed to something other than port 80.
2. License Ocularis 5 Base. You will need to obtain a Base license from OnSSI before installing the Base.
3. Install Ocularis Administrator on the same PC (check hardware specs) or on another PC that has connectivity to the Base PC.
4. Upgrade Ocularis Client to v5 on your Client workstations.
5. Use Ocularis Administrator to log into Ocularis Base and add the NetDVMS master recorder. This will also bring in cameras from the Slave recorders.
6. Configure settings in: Users / Privileges Tab and Views Tab.
7. Optionally, configure Maps in Maps Tab and events in Servers / Events tab.

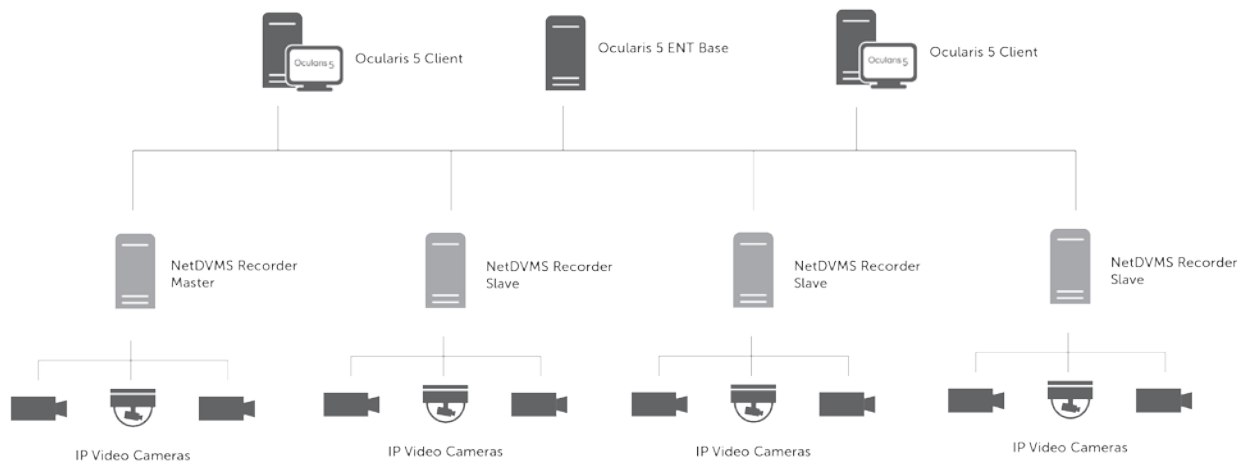
Ocularis 5 Legacy Migration Guide

- 8. Use Ocularis Client to log into Ocularis Base (not the recorder).

If you wish to add any new cameras to this system, you will need to purchase cameras licenses for Ocularis v5 and install a v5 recorder. Refer to Scenario #2.

If you wish to migrate cameras from a NetDVMS recorder, you will need to purchase a StayCURRENT plan for the system (if you don't already have one). Refer to #8 for steps on migrating cameras.

After:



Click to return to [Sample Migration Scenarios](#)