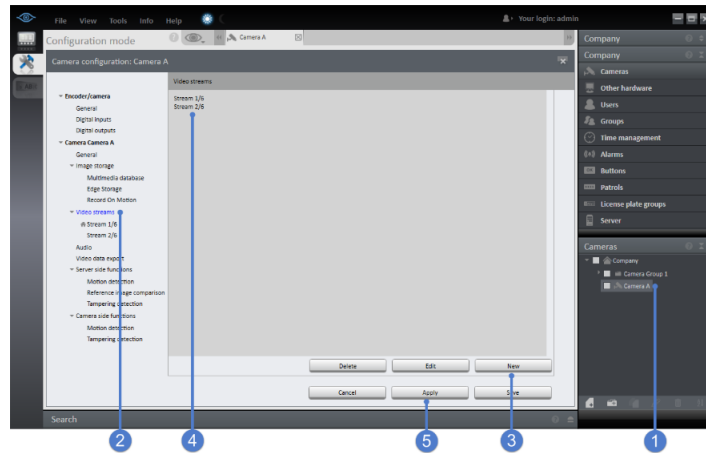


How to Setup and Record Additional Camera Video Streams

This document will walk through the steps to create an additional video stream profile from a camera, as well as how to configure the recording software to use this stream for alarm (i.e. motion) recording.

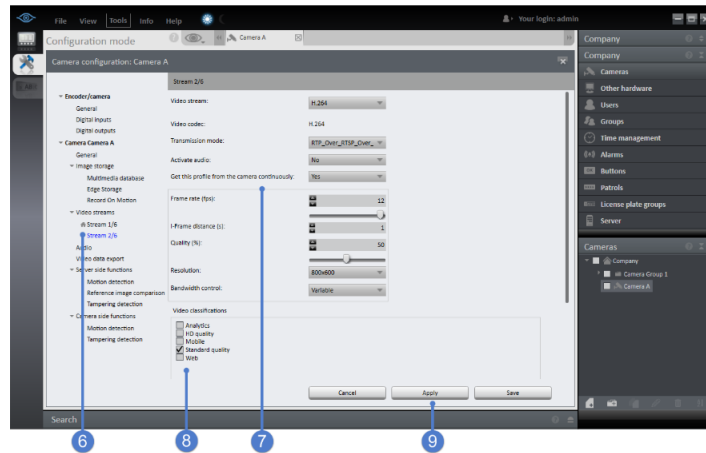


Select the camera that will have an additional stream added. (1)

Select 'Video streams' (2) and then 'New' (3) to create an additional stream for the camera which will then be listed (4).

NOTE: the number of stream profiles allowed will vary by device. The 'Stream' section will list the total number of stream profiles that device will allow with the number after the slash (/). The device used in the screen shot above shows that a total of 6 profiles can be configured.

Click 'Apply' to apply the changes. (5)

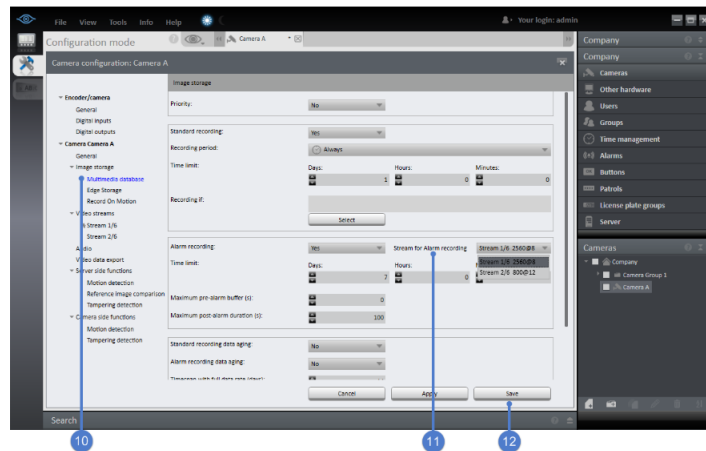


Select the new stream (6) and configure the desired settings (7).

NOTE: 'Get this profile from the camera continuously'
This setting will enable the recorder to continually stream this video profile. Once a second stream is added this will be an option for all stream profiles including the original.
If the stream profile is used for Alarm Recording, the video will always stream regardless of this setting.

Select a classification for this video stream profile (8). This is required in order to select the stream via the 'aux' button in Ocularis Client or to use an alternate default stream in v5.2.1 and higher.

Click 'Apply' to apply the changes. (9)



Select 'Multimedia database'. (10)

In the 'Alarm recording' section, set the necessary parameters. For 'Stream for Alarm recording', select the desired stream to be recorded when this camera has an alarm triggered (11). This includes record on motion.

Click 'Save' to save the changes and exit the configuration page. (12)