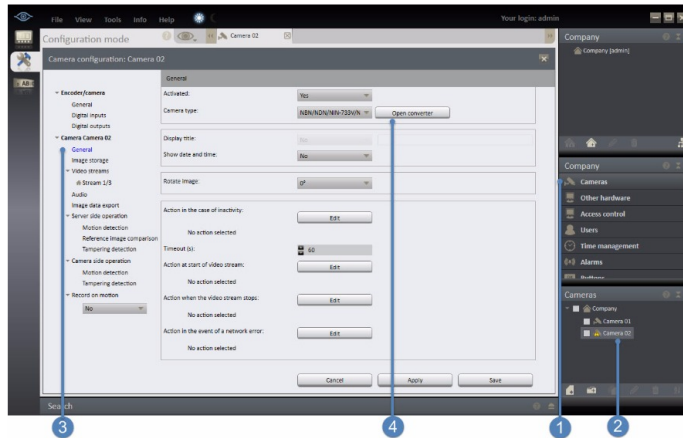


How to Replace a Camera

Ocularis Recorder gives you the ability to quickly and easily swap one camera with another and still retain the video from the original camera.

The new camera needs to have the same IP address as the camera being replaced.

To replace the camera, open the Ocularis Recorder Manager.

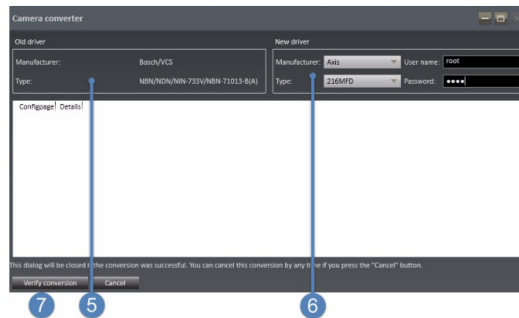


Click on Cameras in the Control Bar. (1)

Find the camera that will be replaced and select it so it now shows under Configuration Mode. (2)

Under the Camera section, click General. (3)

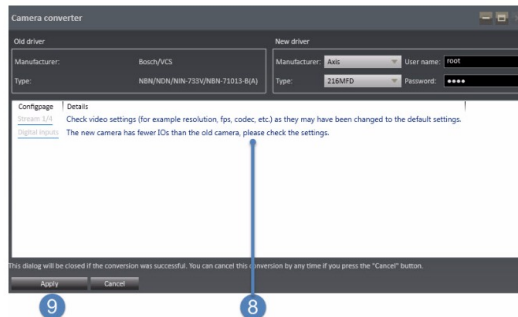
Click 'Open Converter' to start the replacement process. (4)



In the converter dialogue box, you will see information from the old camera on the left. (5)

On the right will be the information to add about the new camera such as manufacturer, model (type) and the credentials to access the camera. (6)

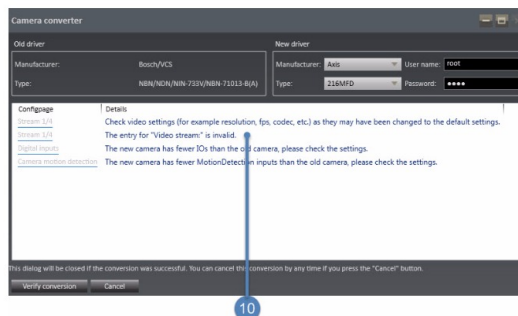
Click on 'Verify Conversion.' This will verify that the information used in (6) is correct. (7)



After the conversion, messages will appear informing you of the status of the conversion and if there are any issues. (8)

If there are no issues with the conversion, there will be an 'Apply' button. Click 'Apply' to keep the changes. (9)

If there are errors, then the button will still show 'Verify Conversion.'



Above is an example of an error. In this case the error says an invalid video stream is selected (10). In this case it is due to the original camera being set in h264 and the new camera not supporting that stream format. The fix is to change the streaming from h264 to MJPEG. This can be done by clicking on the error line under 'Configpage.'