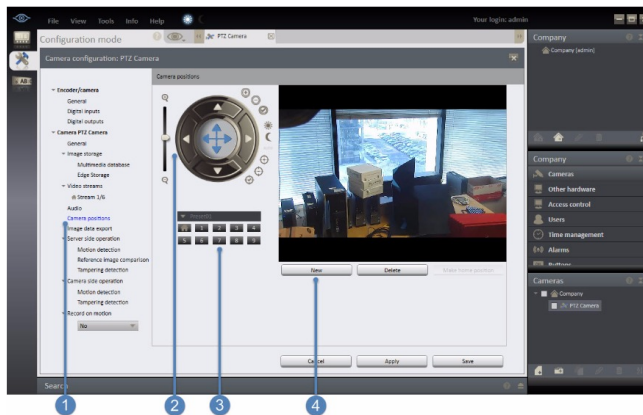


How to setup PTZ Presets and a PTZ Patrol

This document explains the basic steps to create PTZ presets and a PTZ patrol using the Ocularis Recorder.

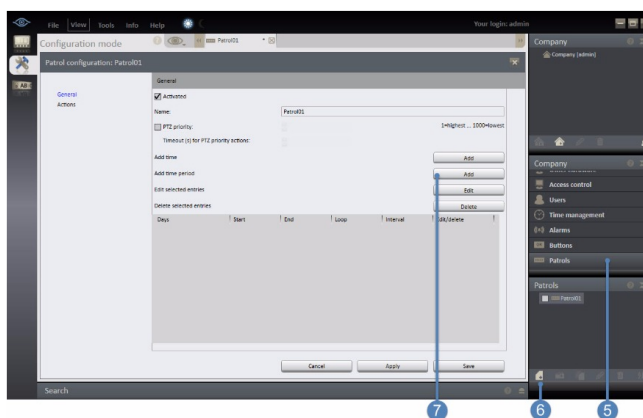


In the Ocularis Recorder Manager, select the camera and click Camera Positions. (1)

Using the PTZ tools, move the camera to the desired position. These tools allow you to pan, tilt, zoom. (2)

Next, select the number to set this position. This includes setting the position as Home or 1 through 9. If more are needed they will be added automatically after the 9th one is used. (3)

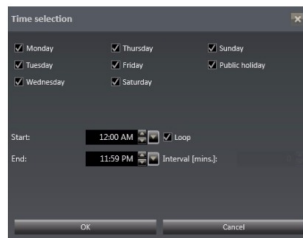
Click New and enter a name for the Position. Click OK when done. (4)



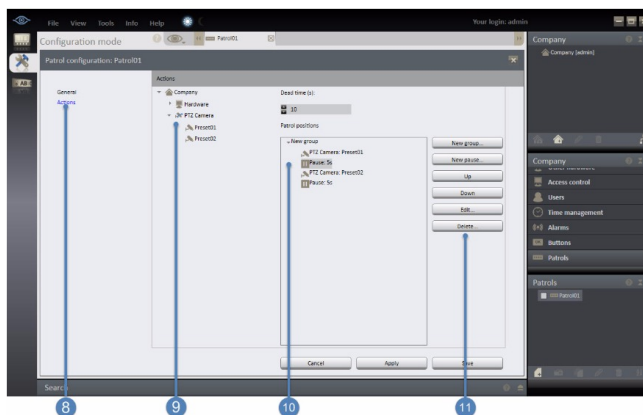
To create a patrol, select Patrols in the control bar (5)

Select "Create New Object" (6), give the Patrol a name and click OK.

Click the Add button next to "Add Time Period." (7)



Here is an example that shows a setup for the Patrol to be active 24/7. It is important that Loop is checked so the patrol will keep cycling through the presets in the patrol.



Click Actions. (8)

Here is where you will set the presets to be used by the patrol as well as the length of time the camera will stay at that preset before continuing.

Expand the PTZ camera and the list of presets will be displayed. (9)

Drag each one by one over to New Group. (10)

The buttons on the right (11) can be used to do the following: add a new pause, rearrange the presets and pauses up or down in the list, edit existing pause times and to delete pauses and presets. Note: a pause needs to be added between each preset.

Click Save when done.