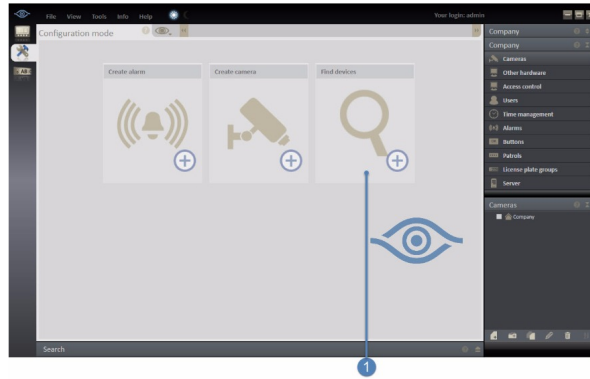
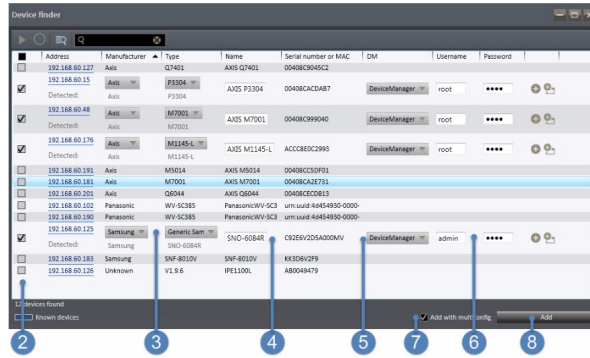


Adding and Configuring Multiple Cameras at the Same Time

With Ocularis Recorder you have the ability to add and configure multiple cameras at the same time. Multiple cameras can be configured while adding or after they have been added. This document will walk through the steps to accomplish this.



To add multiple cameras at once, log into Ocularis Recorder Manager and select 'Find devices' (1).



'Device finder' will quickly discover any cameras on the network. Note that 'Device finder' will only discover cameras on the same network as the PC from which Ocularis Recorder Manager is run.

Once the list of cameras is displayed you can check each one you wish to add (2).

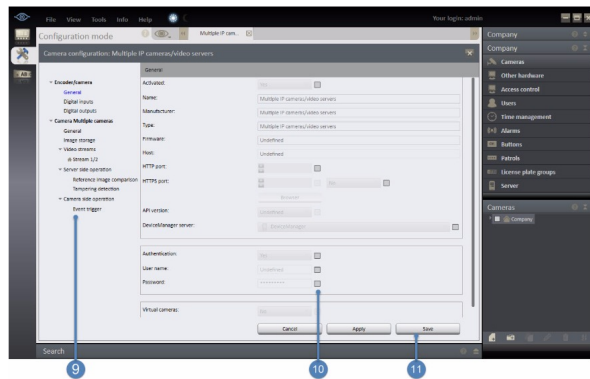
If not already done, select the correct camera manufacturer and model for the devices you are adding (3).

The default name will be the camera model. This can be changed (4).

If there is more than one Device Manager you can select which one you want the camera to record to (5).

Enter the correct username and password for the camera (6).

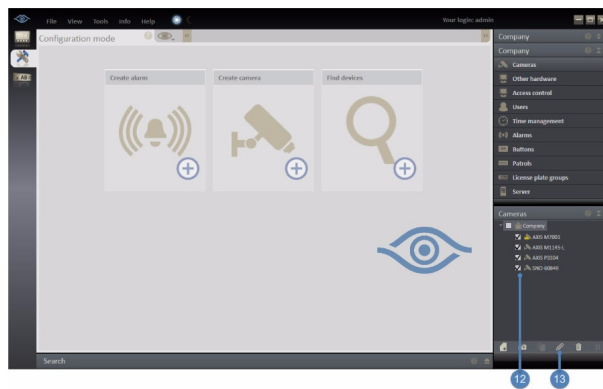
Make sure 'Add with multicfg' is selected then click 'Add' (8).



After adding the cameras, a 'Multiple IP camera/video servers' configuration page will be displayed. While it looks similar to the configuration page for a single camera with the list of settings tabs (9), you will notice that many settings are grayed out with some of them having a check box (10). Any entry with a check box is a setting that can be set for all devices that are part of the multi config.

Note: If no settings are configured and you click 'Apply' or 'Save' the cameras will be added with the same settings as if you added them individually.

When done with configuration, click 'Save' (11) to save the settings and exit the 'Multiple IP camera/video servers' page.



Configuration on multiple cameras can also be done after they have been added into the system. Open the list of cameras and check the cameras to be configured (12). Then click the edit icon (13) to open the same page as shown with steps 9 through 11.