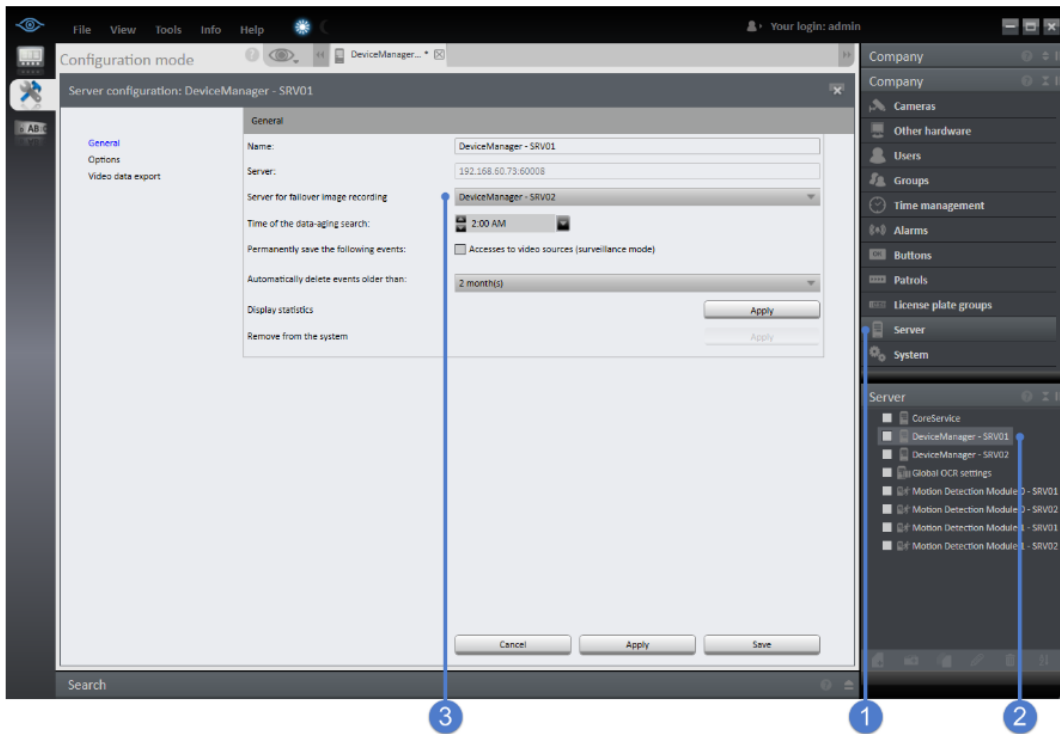


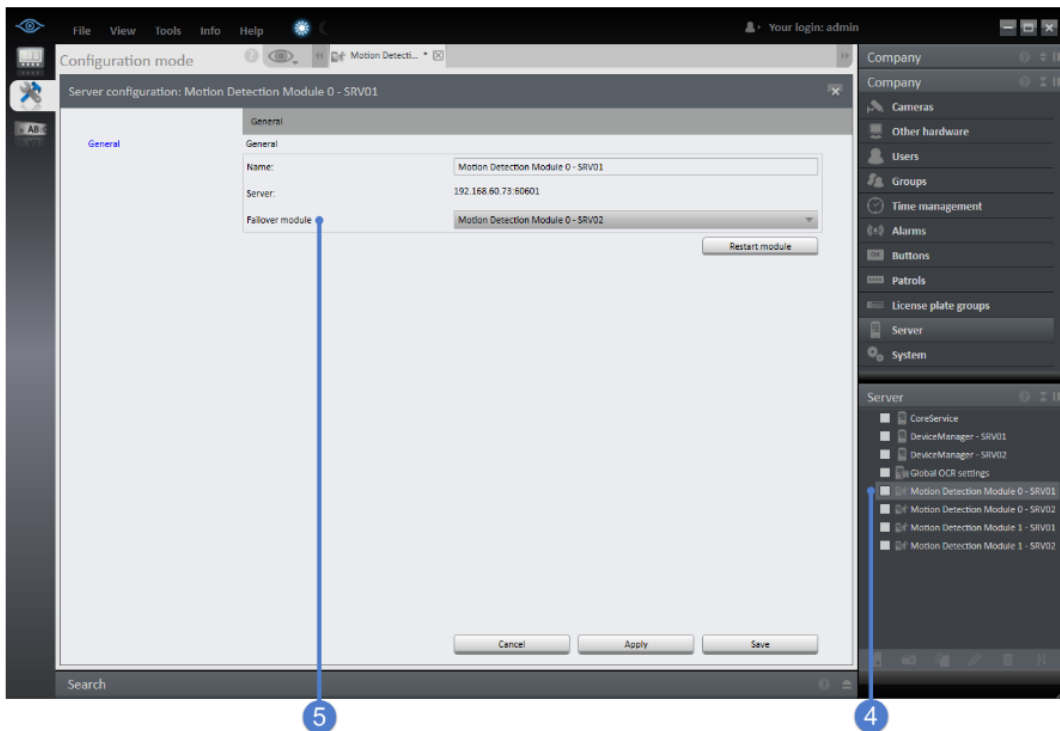
How to Setup Video Failover

Ocularis 5 Enterprise and Ultimate models offer the feature of video failover. This feature allows one Device Manager (DM) to take over the camera recording of another DM if it goes offline. This document will walk through the necessary steps to properly configure video failover.



After logging in with Ocularis Recorder Manager, select 'Server' under Company (1) then the primary DM (2).

Use the pull down menu for 'Server for failover image recording' to select the DM that will be used as the failover DM (3) and click 'Apply'.



Select one of the Motion Detection Modules from the primary DM (4) and use the pull down menu for 'Failover module' to select the failover server that will take care of the motion detection (5). Do this for all Motion Detection modules for the primary DM server and click 'Apply' when done.

Additional Notes On DM Failover

1. Any DM can be a failover for another DM provided the failover DM can communicate with the cameras.
2. If the failover DM is also used as a primary DM for other cameras, make sure it has the hardware capacity to handle both its normal cameras and those it will take on in a failover scenario. This includes the available space on all the zones.
3. Multiple DMs can failover to the same failover DM. Again, make sure the failover DM can handle the work load of all the cameras in the event where all DMs go offline.