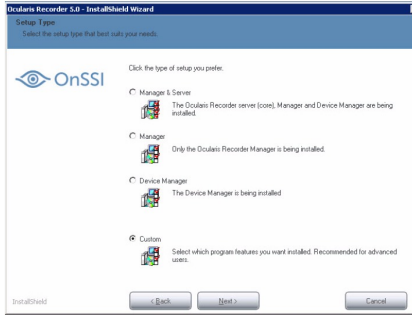


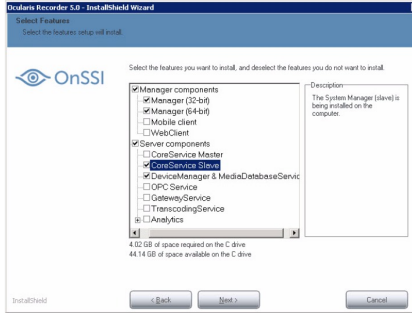
## How to setup a Slave Core server

The Core is where Ocularis Recorder stores the settings for cameras and devices, alarms, triggers, etc. Other Core's can be installed and act as Slave Cores. These slave Cores allow the Ocularis Recorder system to remain operational while the Master Core is offline.

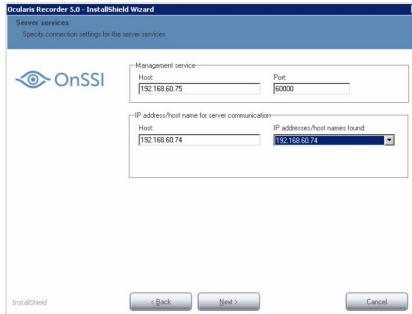
A Slave Core is strictly for the continued use of Ocularis Recorder in it's current state. New settings can not be saved while the Master Core is offline.



Start the Ocularis Recorder installation as normal. On the 'Setup Type' screen, choose Custom and click Next.

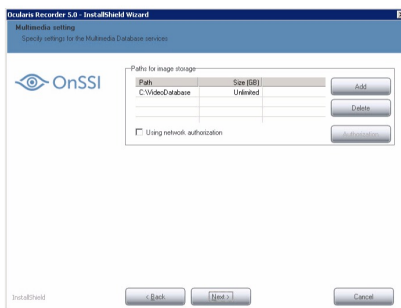


Under Server Components select CoreService Slave. Make sure that DeviceManager & MediaDatabaseService is also checked as this will allow the server to act as a DM/MDS if desired. Click Next.

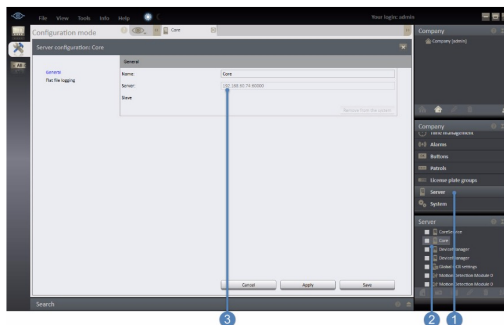


In the 'Host' field under 'Management service', enter in the IP address of the Master Core Server.

In the 'Host' field under 'IP address/host name for server communication', enter in the IP address or host name for the slave server you are installing. The preferred method is using the IP address.



If this server is also a DM, set the location desired for video storage for cameras that will be configured to use this DM. Click 'Next' and then install for the installation to start.



To verify that the new DM is visible to the Master Core, open the Ocularis Recorder Manager.

In the Control Bar, click on Server. (1)

In the Server section you should see now see a second Core listed. (2)

Click on each Core and check the IP address in the Server field to verify the one just installed is listed. (3) In the Name field, it is recommended to change the name can be changed from Core to a unique name of your choice.