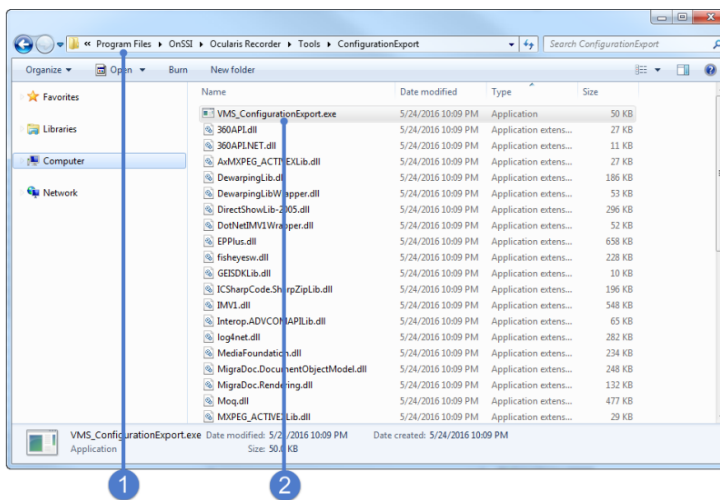


# How to Export the Recorder Configuration

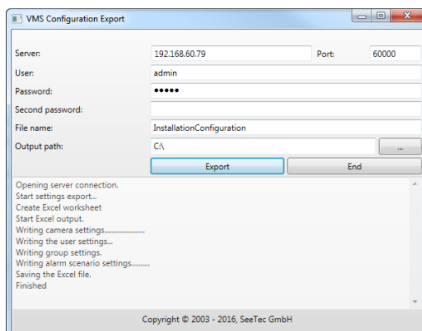
Ocularis 5 Recorder has a utility that allows the configuration of the recorder to be exported into an MS Excel spreadsheet. This can be used for record keeping or any system auditing needs. This document will walk through the steps of exporting this configuration.

- Note: 1) You will need the password for the 'admin' user for Ocularis Recorder.  
2) All the camera passwords will be exported in clear text not encrypted.



On the Master Core server, browse to C:\Program Files\OnSSI\Ocularis Recorder\Tools\ConfigurationExport. (1)

Launch the Configuration Export utility by double clicking the VMS\_ConfigurationExport.exe file. (2)



Enter the Master Server IP address and port (default is 60000). (3)

Enter the user name of 'admin'. (4)

Enter the password for 'admin' as well as the second, if used. (5)

Enter the name you want to give the file. (6)

Browse to the path you want the file to be exported to. (7)

Click 'Export' to start the export process. (8)

The window will show the progress of the export and let you know when it is finished. (9)

The export file will be in the format of an Excel spreadsheet. There will be four worksheets in this file: Camera, User, Groups, Alarm Scenario.

The Camera worksheet will have columns for the following information:

- **Camera No.:** Number given to camera as it is added.
- **Server Activated:** Whether or not the device is activated.
- **Source Activated:** Whether or not the video channel is activated.
- **File - Path:** The Branch location of the device.
- **Name:** Name of the device.
- **Type:** Driver used to add the device. Note the use of any Smart driver will show as 'manufacturer\_GENERIC' Example: 'AXIS\_GENERIC'.
- **IP address:** The IP address of the camera.
- **DeviceManager:** The DM the camera is assigned to.
- **User name:** Camera account used to add the camera.
- **Password:** Password of the camera account used to add the camera. This will be visible in plain text.
- **Recording Type:** How this camera is recording its video, Standard, Alarm or both. Every stream configured will be listed.
- **Ring buffer size:** The number of days the video is being retained for the recording types.
- **Resolution:** The resolution set for the camera stream.
- **Aspect ratio:** the aspect ratio of the above resolution (16.9, 4.3, etc.).
- **Compression:** the Quality setting from the Stream section of the camera configuration. Note that the value in the Manager is between 1 and 100 while the export will show the value as 1000 to 100000.
- **Bandwidth:** The bandwidth setting from the Stream section of the camera configuration.
- **Quality:** The MPEG profile setting from the Stream section of the camera configuration. In most cases it will be set as default as this is not always an option.
- **Streaming mode:** The streaming mode set for the camera (MJPEG, H.264, etc.).

The User worksheet will have columns for the following information:

- **User No.:** Number given to each user as they are added.
- **Name:** The name of the user.
- **Admin yes/no:** Whether or not the user is the admin user for the system. This will be only be the built in 'admin' account.
- **User right:** A list of all the rights that user has. Note that the 'admin' user will not have a list as he inherently has rights to the entire system.
- **Entity:** What Branch the user belongs to.
- **Group:** What group the user belongs to, if any.

The Group worksheet will have columns for the following information:

- **Group No.:** Number given to each group as they are added.
- **Group:** The name of the group.
- **Admin yes/no:** Whether or not the group is the admin group for the system. This will be only be the built in 'administrator' group.
- **User rights:** A list of all the rights that users in this group will have. Note that the under the user worksheet 'User rights' will be empty and the information will be here.
- **Entity:** What Branch the group belongs to.

The Alarm scenario worksheet will have columns for the following information:

- **Alarm scenario No.:** Number given to each alarm scenario as they are added.
- **Name:** The name of the alarm scenario.
- **Prio:** The Priority of the alarm scenario as set in the General section of the alarm. Note that that while the numbering of the priority is 10 for low and 1 for high, this is seen as 190 for the lowest and 10 for highest.
- **Validity:** The time profile assigned the alarm scenario. The default of Always will show up as '-' in the export.
- **Initiating action:** The action that will start the alarm scenario.
- **Type:** The type of action the Initiating action is.
- **Concluding action:** The action that will stop the alarm scenario, if any. In none '-' will be listed.
- **Type:** The type of action that the Concluding action is, if any. In none '-' will be listed.
- **Server action:** The action that the recording server will execute when the alarm scenario is triggered.
- **Type:** The type of action that the Server action is.
- **Client action:** Not used in Ocularis Recorder.
- **Type:** Not used in Ocularis Recorder.