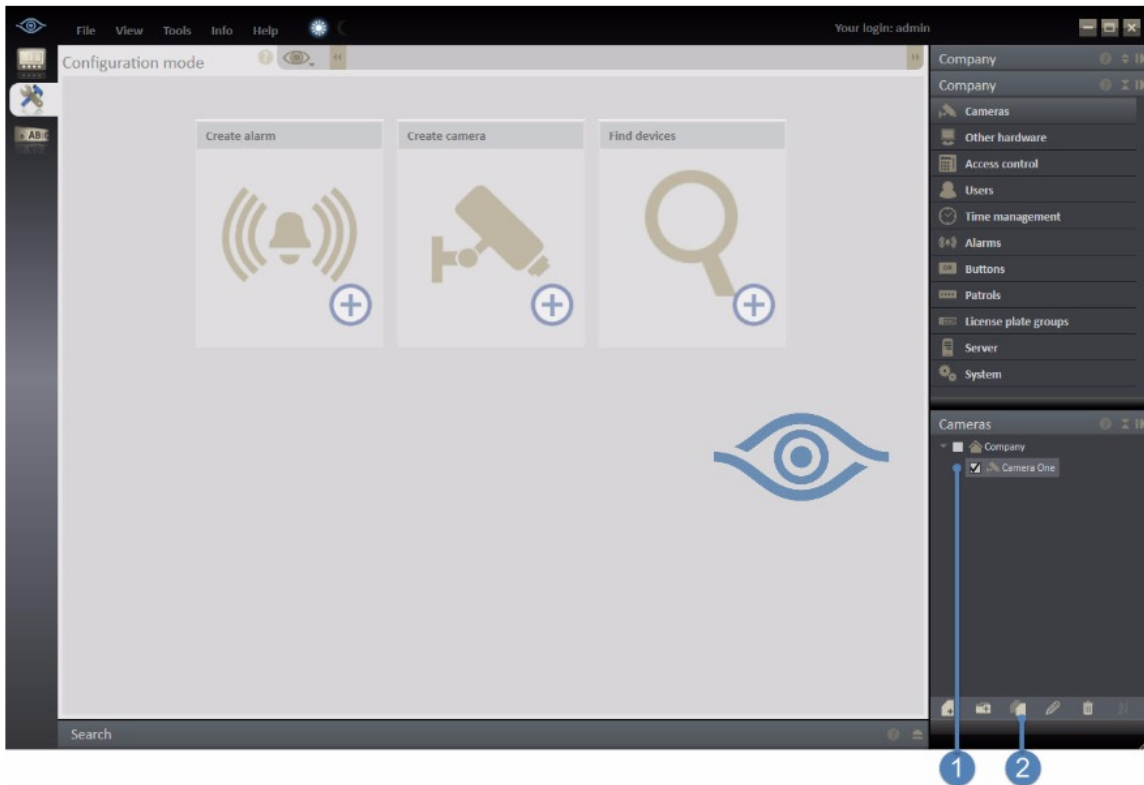


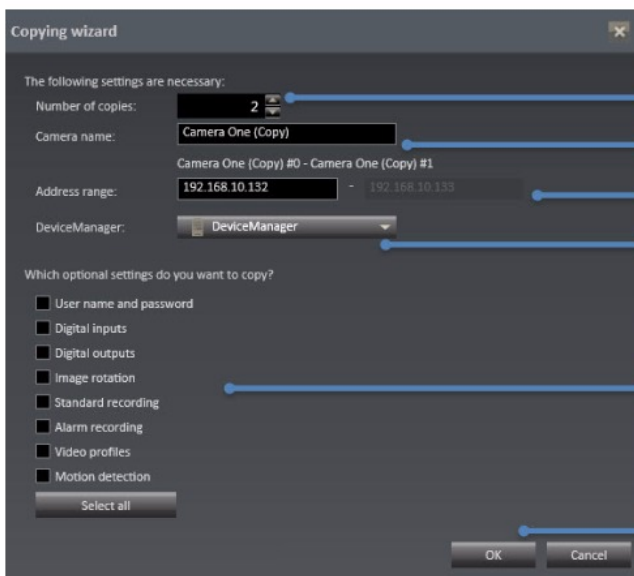
# How to Use a Camera Template to Easily Add Multiple Cameras

Ocularis Recorder allows the copying of the settings from one camera to other cameras of like model as they are added. This means if there are several cameras to be added of the same model, one can be added and configured then used as a template when adding the others.

Once the original camera is added, configure it with the desired settings. Once complete, make sure the camera configuration tab is closed (click Save or the 'x' icon to close the tab).



Select the checkbox next to the camera to be duplicated (1) and then click 'Duplicate object' (2) to open the 'Copying wizard'.



Select the number of copies of the template camera to create. (3)

Give the new camera(s) a name (4). The name used will be followed by a '#' symbol and the number for each copy. The names can be changed after the cameras are added.

Designate the starting IP address range (5) that the cameras will use. The last IP is determined by the number of copies (3) to be used.

Assign the camera(s) to a Device Manager (6). Only one DM can be selected for all cameras being added. This can be modified after the camera is added.

Check the boxes for optional settings that you want the camera(s) to inherit. (7)

Click 'OK' to have the cameras added to Ocularis Recorder. (8)

NOTE: the 'Motion detection' check box refers only to camera side motion detection settings. At this time Server Side Motion Detection settings are not duplicated.

NOTE: the IP address can be changed after adding the cameras so if the cameras that are to be added do not have consecutive IP addresses, just select the proper number of cameras to add, add the cameras, then go back and change the IP addresses.