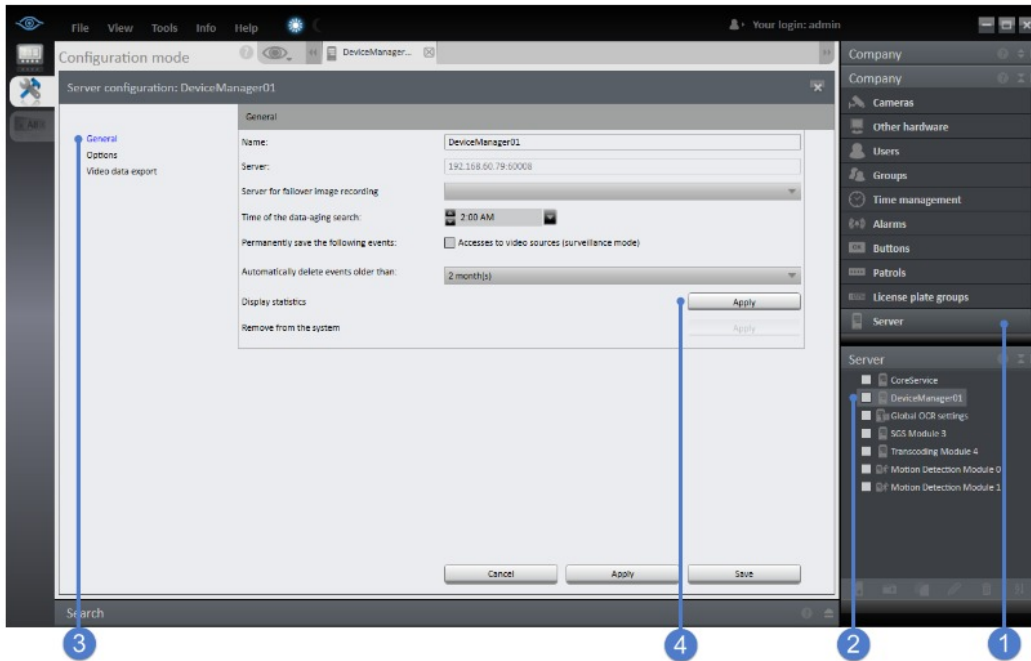


How to Display Device Manager Server Statistics

Ocularis Recorder offers a statistics page showing disk usage for any and all Device Managers and their cameras that are attached to a Master Core. This document will walk you through the steps to access this statistics page.



When logged into Ocularis Recorder Manager, select the 'Server' option (1) then the Device Manager from the Server section (2).

Select the 'General' tab (3) and next to 'Display statistics' select 'Apply' (4).



The statistics page has two sections: 'Zones' (5) and 'Cameras' (6).

The 'Zone' section will list the zones assigned to this DM, their location or path, status and how much disk space they are assigned and are currently using.

The 'Camera' section will list all the cameras that are assigned to this DM and enabled. There are two parts for each camera: Default recordings (Standard recordings) and Alarm recordings. Important information provided includes the first and last image for each camera, the total time period between these two, and the total amount of space each camera is using.

The information provided can be exported as a .csv file (7) and you can also reload the information to make it current (8).

Once you are done, click 'Close' to exit the statistics page. (9)