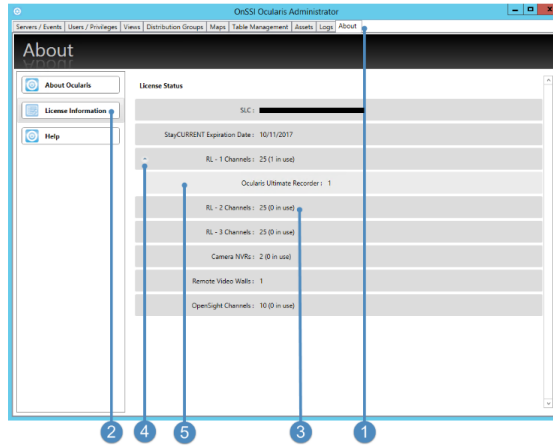


How to Check License Counts in Ocularis

Ocularis systems maintain device licenses on Ocularis Base and Ocularis Recorder. While typically the license counts are the same on both, there may be cases where you have more licenses on one than on the other. This document will help you identify your total Ocularis licenses and those in use.

Ocularis Base

In order to check the licenses being used by Ocularis Base you will need access to the Ocularis Administrator application.



Open the application, log into Ocularis Base, and select the 'About' tab (1) followed by 'License Information' (2).

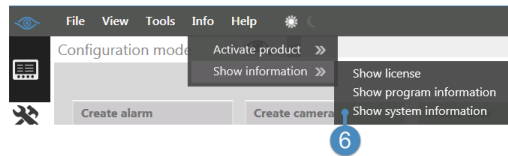
The total number of licenses is shown followed by the number in use (or registered in the 'Server / Events' tab) (3).

NOTE: For more information on the RL-x Channels, please see 'Ocularis Installation and Licensing Guide' located in the Documentation section of OnSSI.com

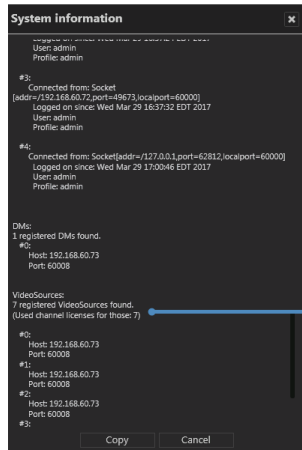
For categories with licenses in use, you will be able to expand that row (4) to display the recorder type(s) in addition to the licenses being used (5).

Ocularis Recorder

In order to check the licenses being used by Ocularis Recorder you will need access to the Ocularis Recorder Manager application.

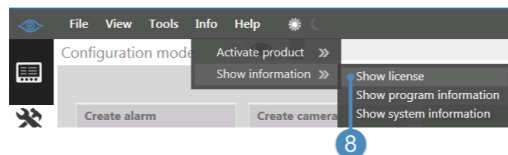


Using the Ocularis Recorder Manager, log into the Master Core and select Info > Show Information > Show system information. (6)

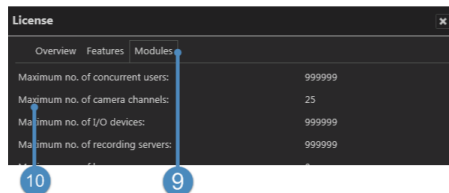


Scroll down the list of information until you see the Video Sources section.

There you will see the number of registered VideoChannels and the number of licenses being used. (7)



To check the total number of licenses allowed, go back to Info > Show Information > Show license. (8)



Select the 'Modules' tab (9) and the total license count will be displayed on the second line, 'Maximum no. of camera channels' (10).