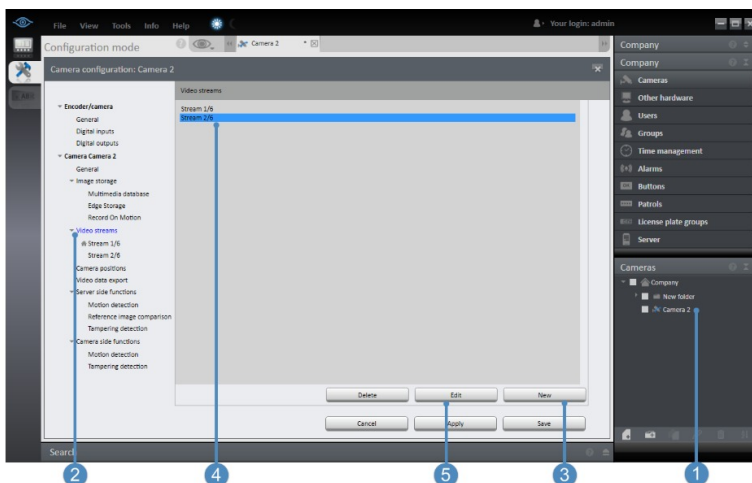


How to Add Additional Video Streams

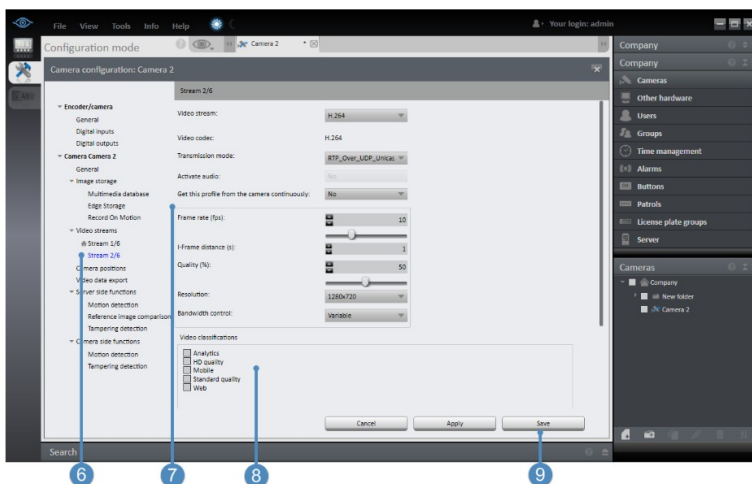
This document will go through the steps of creating an additional video stream on cameras that support more than one video stream. You can determine how many streams a camera supports by looking at 'Stream 1/x' under 'Video streams'. The 'x' represents the number of total streams the camera supports.



Select the camera where you want to add an additional stream. (1)

Select 'Video streams' (2) then 'New' (3) to add an additional video stream. On this camera a total of 6 streams can be created.

Select the new stream (4) and click 'Edit' (5) to open the Stream configuration page for that video stream.



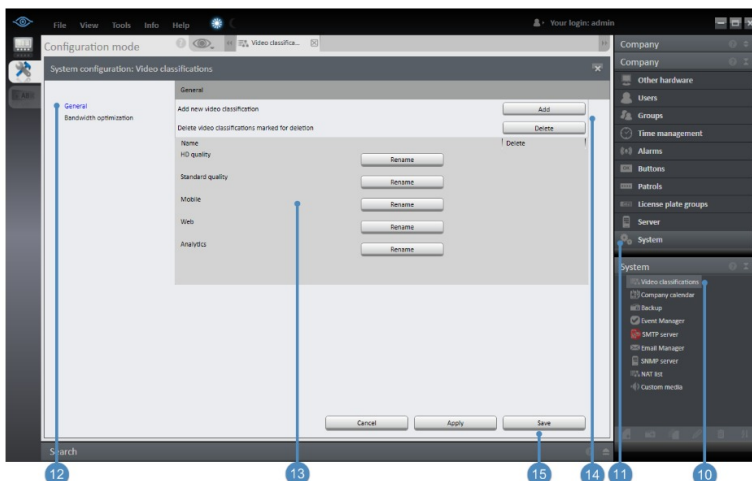
The video stream in blue is the one in the process of being configured. (6)

Configure the settings for the stream. (7)

Set the 'Video classification' for the stream. (8)

Note: Setting the 'Video classification' for Stream 1/x and any additional streams is mandatory in order for Ocularis to use the streams.

Click 'Save' to save the settings and exit Camera configuration. (9)



The default 'Video classification' names can be changed and more classifications added via the 'Video classification' (10) option under 'System' (11).

Select 'General' (12) to display the list of existing video classifications (13). These can be renamed.

New classifications can be added and existing ones deleted. The preexisting classifications can only be renamed; they cannot be deleted. (14)

Click 'Save' once finished to save settings and exit the video classification section. (15)