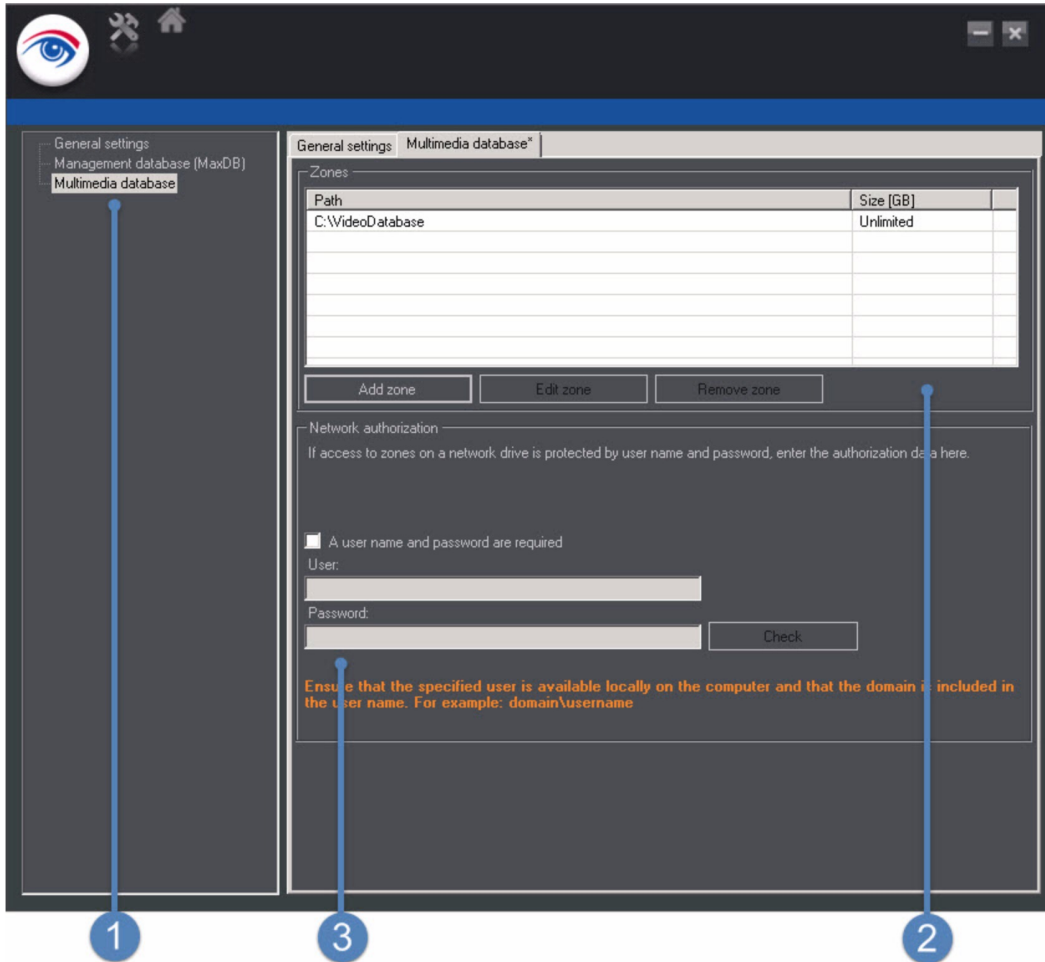


How to Add a Zone

Ocularis Recorder stores video related files in locations called 'Zones.' There can be multiple Zones per Device Manager (DM) server. These can be configured during the DM's installation or anytime after installation. These instructions will walk through the steps of adding a new Zone after installation.

To create a new Zone, open the 'Ocularis Recorder Administration Tool.' This is done by going to Windows Start, All Programs, OnSSI, Ocularis Recorder.

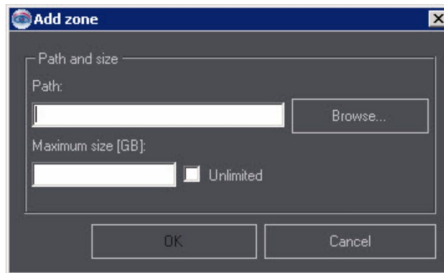


Once open, select 'Multimedia database.' (1)

The top section lists the Zones already setup. Here you can also add a new Zone as well as edit and delete existing Zones. (2)

Zones can be local to the machine or they can be on the network. When creating a Zone that is on the network you will need to designate a network user with rights to the network location. This is done in 'Network authorization.' (3)

Network locations need to be in a UNC format. Mapped drives cannot be used for Zone locations.



When 'Add zone' is selected, a new dialogue box is opened. Here the Zone location can be set as well as the maximum amount of space that will be used for the storage of video. 'Edit zone' will show the same box and allow for the changing of existing settings.

Never use the root of a drive as the Zone location. Create a folder in the Zone root and point the Zone location to that folder.